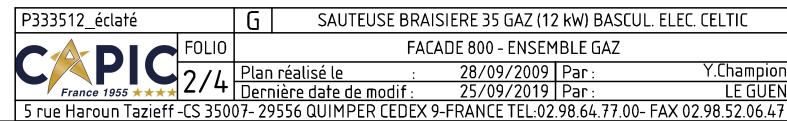
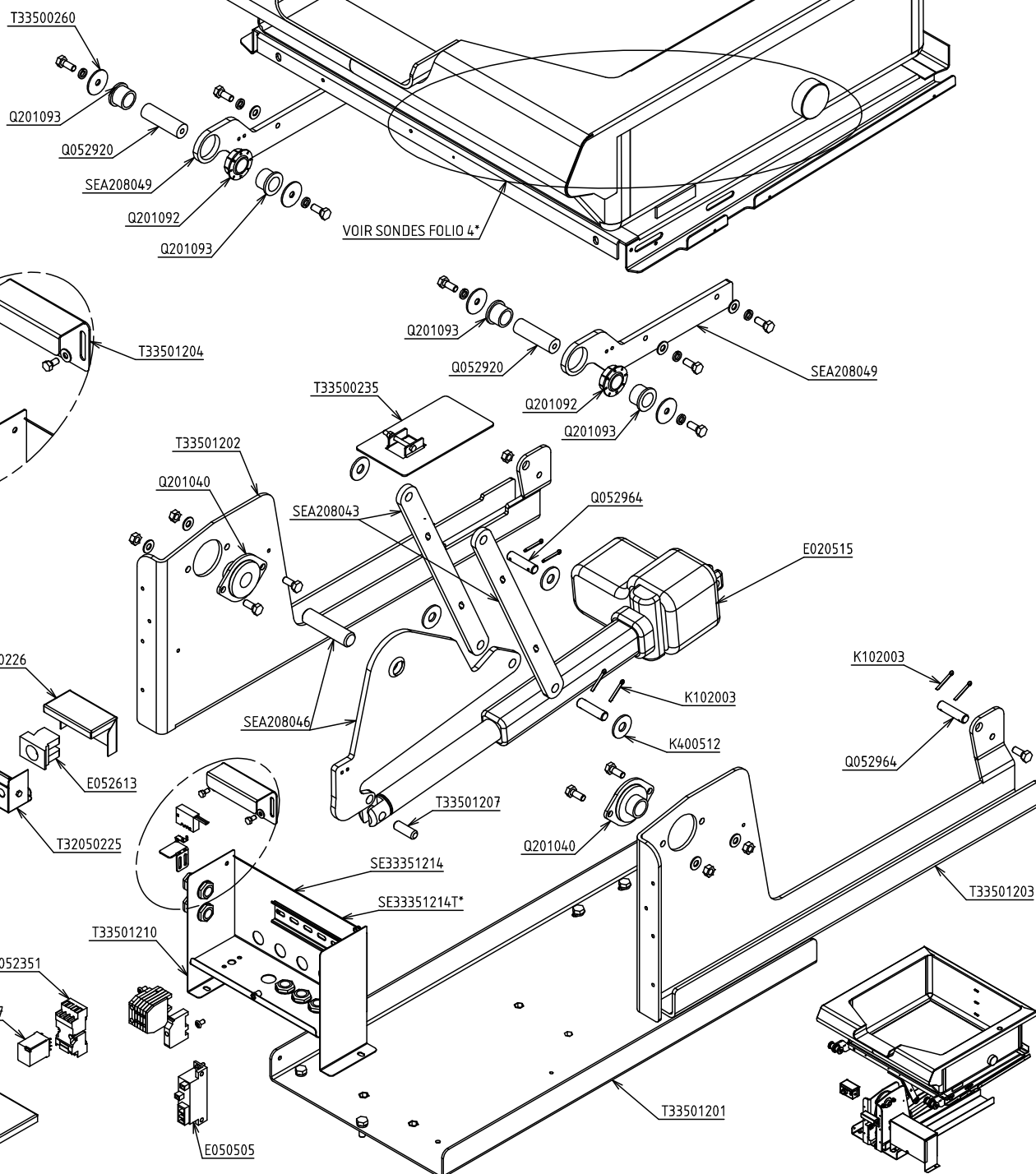
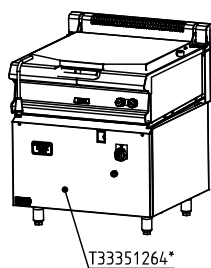
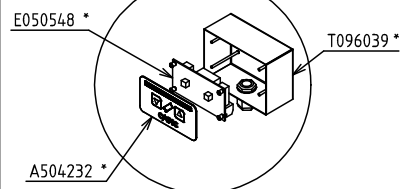




W385021





P333512\_éclaté

G

SAUTEUSE BRAISIERE 35 GAZ (12 kW) BASCUL. ELEC. CELTIC

3/4

FACADE 800 - ENSEMBLE BASCULEMENT ELEC.

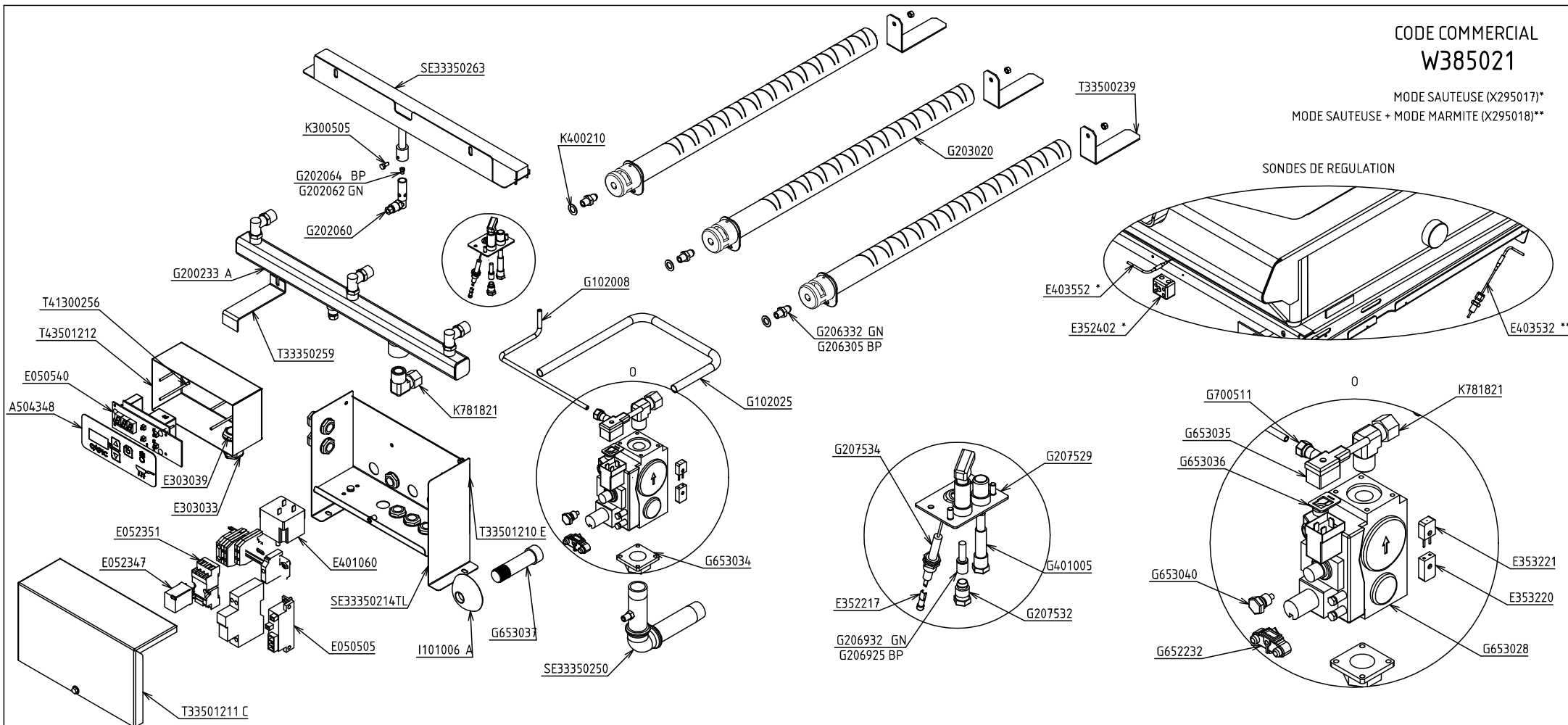
Plan réalisé le : 28/09/2009 Par : Y.Champion

Dernière date de modif. : 25/09/2019 Par : LE GUEN

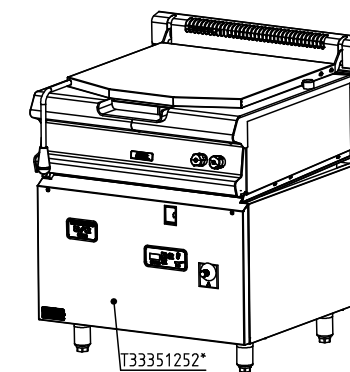
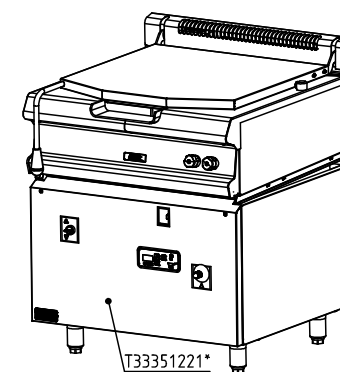
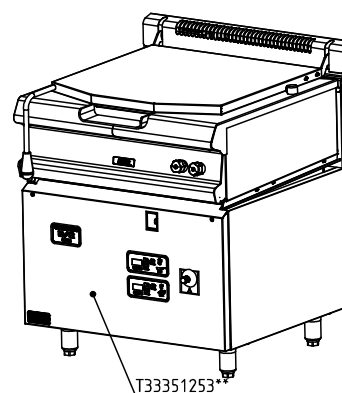
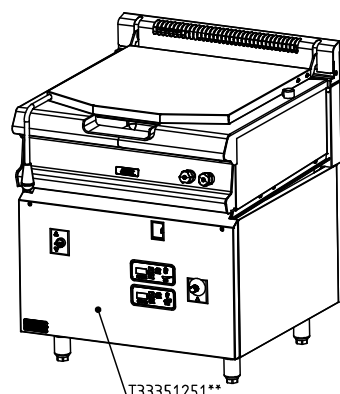
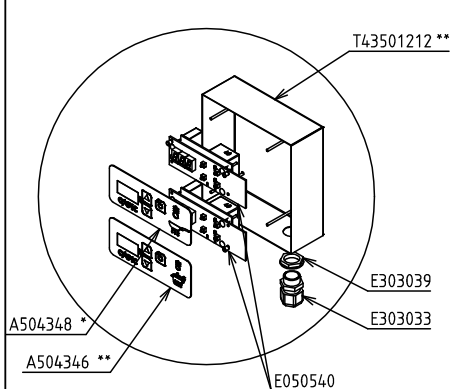
5 rue Haroun Tazieff - CS 35007- 29556 QUIMPER CEDEX 9-FRANCE TEL:02.98.64.77.00- FAX 02.98.52.06.47

CODE COMMERCIAL  
W385021

MODE SAUTEUSE (X295017)\*  
MODE SAUTEUSE + MODE MARMITE (X295018)\*\*



OPTION MODE SAUTEUSE + MODE MARMITE



P333512_éclaté	G	SAUTEUSE BRAISIERE 35 GAZ (12 kW) BASCUL. ELEC. CELTIC
FOLIO	4/4	OPTION MODE SAUTEUSE & MODE SAUTEUSE + MODE MARMITE
Plan réalisé le	28/09/2009	Par : Y.Champion
Dernière date de modif.	25/09/2019	Par : LE GUEN
5 rue Haroun Tazieff -CS 35007- 29556 QUIMPER CEDEX 9-FRANCE TEL.02.98.64.77.00- FAX 02.98.52.06.47		