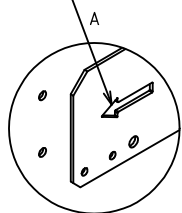


CODE COMMERCIAL  
W382916

ATTENTION AU SENS (PENTE)  
LA FLÈCHE POINTE SUR L'AVANT



SE34300103

SE32190204 A

T36680012 C

T34300102 A

E151772 A

E151772 A

E151772 A

E151772 A

T44320122 A

T44320122 A

T34340134 A

T34340134 A

T34340101 A

T34340101 A

T34100115 C

T32050223 A

T32050215 A

T32050203 G

T34300106 D

SE44320122

T44320112 D

T34340104 A

E303020

T34100119 B

T34100118 A

E303040

E303034

SE42020203 A

SE32150201

Q051129 A

T34300103 C

E400925

E052510

E400925

E052510

SEQ104228M B

SEQ104213M A

SEQ104228M B

E202098

E202097

E401330

Q051128 A

T34300104 C

T34300107 A

T32050215 A

T34100115 C

T32050223 A

T32050204 G


P343501_éclaté	A	GRILLADE INOX LISSE ELEC. (10 kW) CELTIC	
<b>CAPIC</b> France 1955 ★★★★★ 1/1	FOLIO	PLAQUE 800x550	
	Plan réalisé le	28/02/2018	Par : Y.Champion
	Dernière date de modif :		Par :
SA CAPIC AVENUE DES SPORTS 29556 QUIMPER CEDEX 9 TEL:02.98.64.77.00- FAX 02.98.52.06.47 tél.02.98.64.77.00 - fax: 02.98.52.06.47 e-mail : capic@capic-fr.com			

W383061

CODE COMME W3830

ALLUMAGE ELECTRIQUE (X)

Exploded view diagram of the FACADE 800 - ENSEMBLE (P306812T\_éclaté) showing various components and their assembly order. The diagram includes a central unit with a gas valve (Q053062) and a control panel (T30681209). Components are labeled with part numbers: T30681205, T30681247, SE30681207, T30681246, T30681214, T30681213, T30681212, T30681219, Q106058, Q30681257, T30681250, T30681230, T30681253, T30681250, A301042, T30681225, T30643009, T30681260, T30681261, SE30681258G, T30643009, Q053062, Q105525, Q104615, T30681237, T30645004, T30681224, SE30681209, and T30681224. A detailed view 'A' shows the connection of the gas valve and control panel. The diagram is titled 'CODE COMME W3830' and 'ALLUMAGE ELECTRIQUE (X)'.

P0360812T_éclaté	A	FOUR STATIQUE GN 2/1 GAZ (10 kw) CELTIC	
	FOLIO	FACADE 800 - ENSEMBLE	
	1/2	Plan réalisé le :	01/07/2009 Par : mmotti
		Dernière date de modif. : - Par :	
SA CAPIC AVENUE DES SPORTS 29556 QUIMPER CEDEX 9 TEL:02.98.64.77.00- FAX 02.98.52.06.47			

W383061