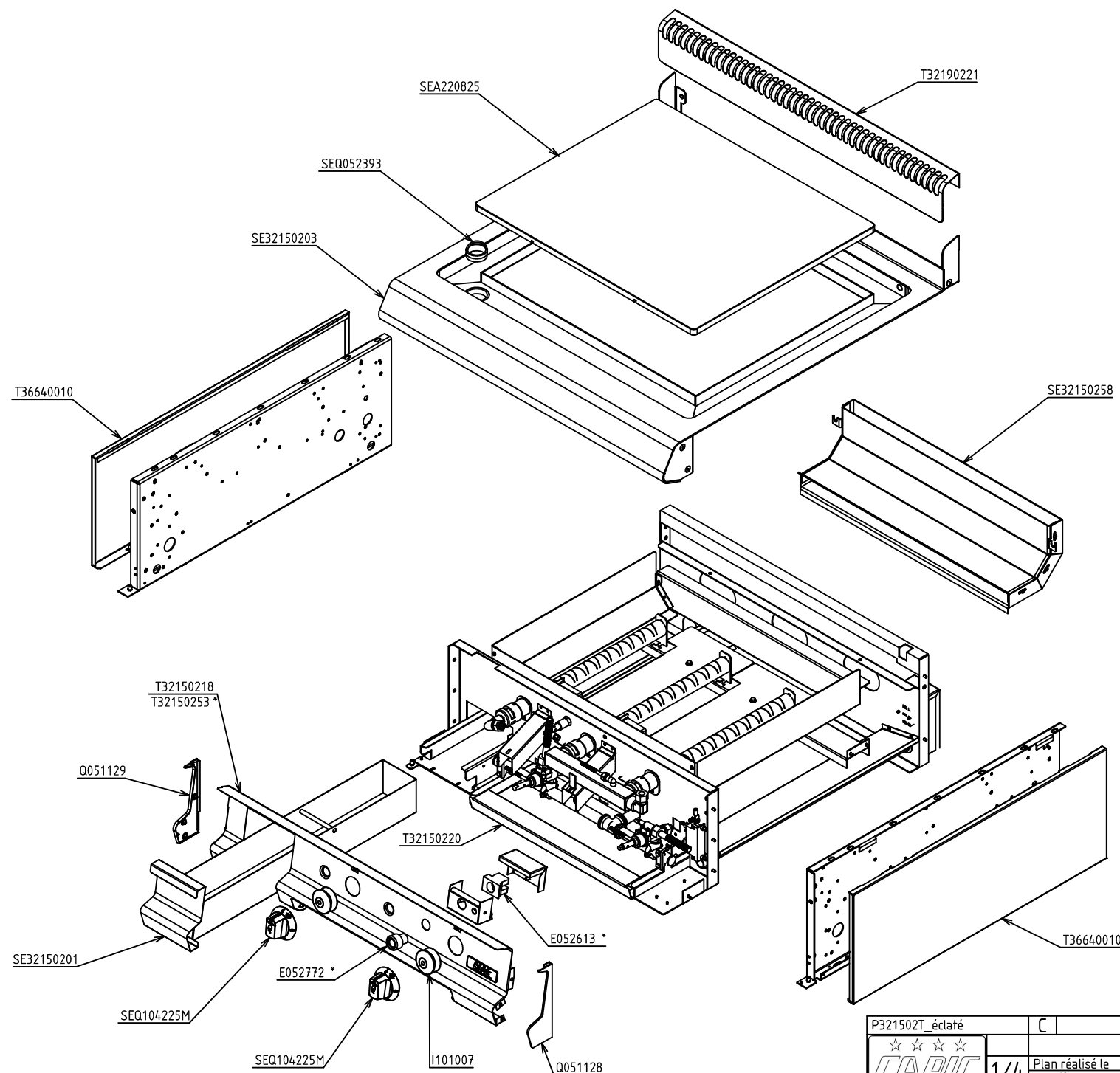


CODE COMMERCIAL

W381515

ALLUMAGE ELECTRIQUE (X901501)*



P321502T_éclaté		C	PLANCH GAZ (9 kW) CELTIC	
<div>☆☆☆☆</div> <div>CAPIC</div>			FACADE 800	
1/4		Plan réalisé le	26/08/2009	Par : Y.Champion
		Dernière date de modif :	04/10/2017	Par : V.Le Guen
SA CAPIC AVENUE DES SPORTS 29556 QUIMPER CEDEX 9 TEL:02.98.64.77.00- FAX 02.98.52.06.47				

W381515

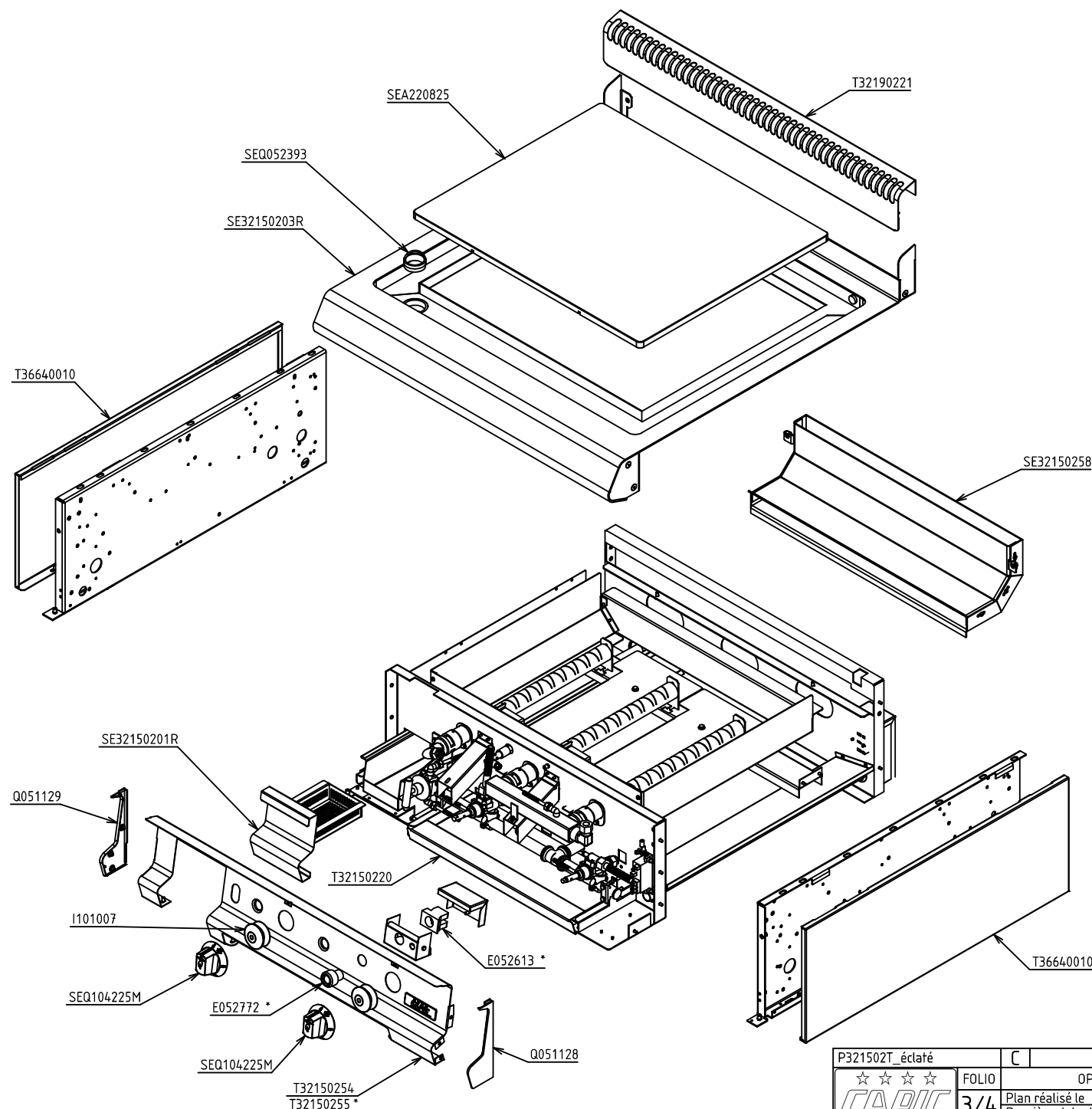
Exploded view diagram of a mechanical assembly. The diagram shows various components and their assembly relationships, with labels for specific parts:

- Top Left:** A circular inset labeled 'A' shows a detail of a mounting plate with two screws. Below it, a long, ribbed cylindrical component is labeled **G203025**. Further down, a smaller component is labeled **G206325 GN** and **G206303 BP**.
- Top Right:** A circular inset labeled 'A' shows a detail of a mounting plate with two screws. Below it, a long, ribbed cylindrical component is labeled **G203025**. Further down, a smaller component is labeled **G206325 GN** and **G206303 BP**.
- Center:** A long, ribbed cylindrical component is labeled **G203025**. Below it, a smaller component is labeled **G206325 GN** and **G206303 BP**. To the right, a long, ribbed cylindrical component is labeled **G203025**. Below it, a smaller component is labeled **G206325 GN** and **G206303 BP**.
- Bottom Left:** A component is labeled **G102035**. Below it, a smaller component is labeled **G202062 GN** and **G206946 BP**. To the right, a component is labeled **G202060**. Below it, a smaller component is labeled **SE32150263**. To the right, a component is labeled **G102004**. Below it, a smaller component is labeled **SE32150269**. To the right, a component is labeled **E052613 ***. Below it, a smaller component is labeled **SEQ104225M**.
- Bottom Center:** A component is labeled **G102008**. Below it, a smaller component is labeled **I101007**. To the right, a component is labeled **G102035**. Below it, a smaller component is labeled **G304040**.
- Bottom Right:** A component is labeled **E050505 ***. Below it, a smaller component is labeled **K400210**. To the right, a component is labeled **G206325 GN** and **G206303 BP**. Below it, a smaller component is labeled **SE32150260**.
- Far Right:** A component is labeled **G207529**. Below it, a smaller component is labeled **G206932 GN** and **G206925 BP**. To the right, a component is labeled **G207534 ***. Below it, a smaller component is labeled **G40100**. To the right, a component is labeled **G207532**.

P321502T_éclairé		C	PLANCHAZ GAZ (9 kW) CELTIC	
☆☆☆☆ CAPIC	FOLIO	FACADE 800 - ENSEMBLE GAZ		
2/4	Plan réalisé le	26/08/2009	Par	Y.Champion
	Dernière date de modif.	04/10/2017	Par	V.Le Guen
SA CAPIC AVENUE DES SPORTS 29556 QUIMPER CEDEX 9 TEL.02.98.64.77.00- FAX 02.98.52.06.47				

CODE COMMERCIAL
W381515

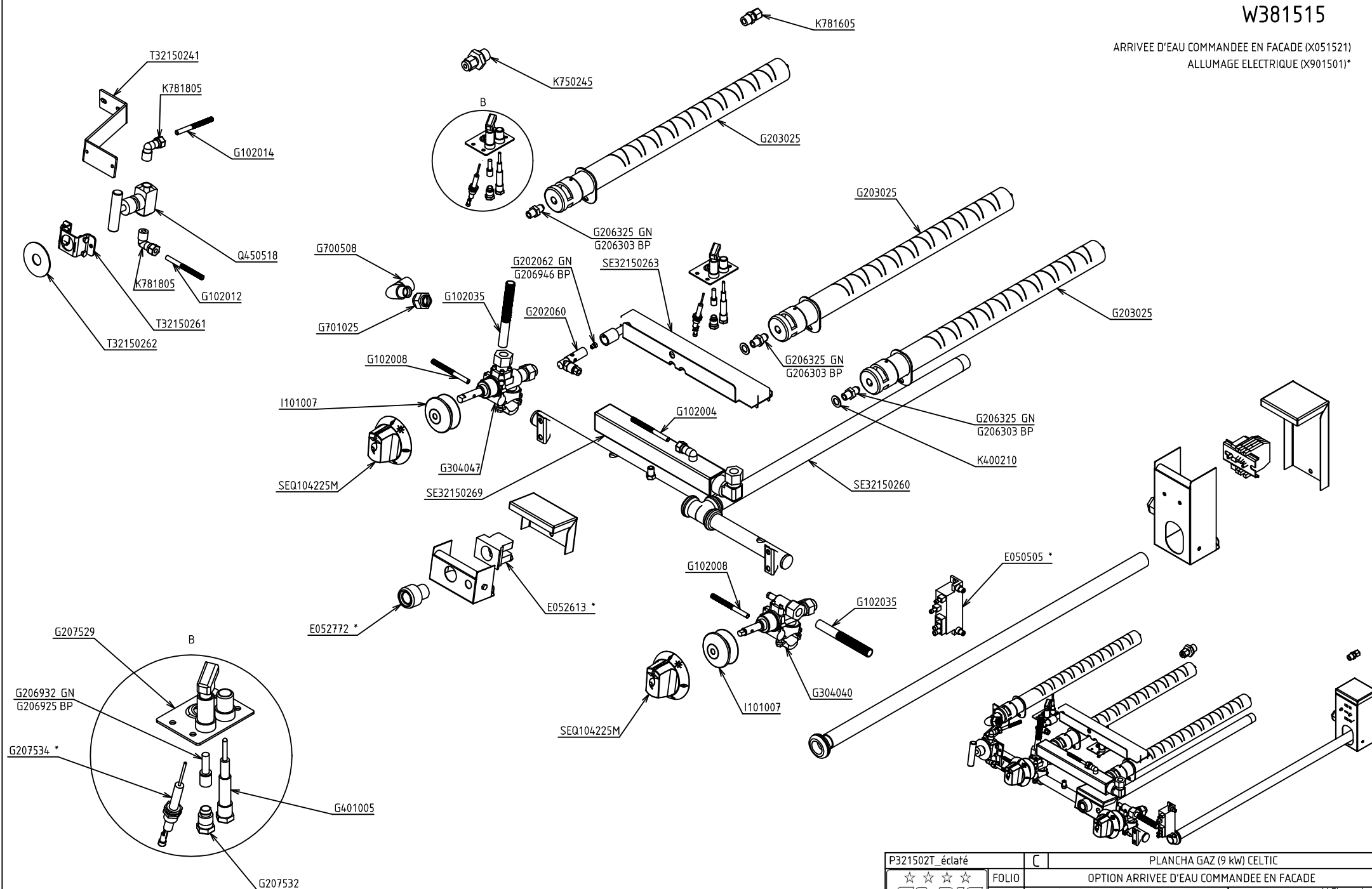
ARRIVEE D'EAU COMMANDEE EN FACADE (X051521)
ALLUMAGE ELECTRIQUE (X901501)*



P321502T_éclaté	C	PLANCHA GAZ (9 kW) CELTIC	
☆☆☆☆	FOLIO	OPTION ARRIVEE D'EAU COMMANDEE EN FACADE	
CAPIC	3/4	Plan réalisé le	26/08/2009 Par : Y.Champion
		Dernière date de modif.	04/10/2017 Par : V.Le Guen
SA CAPIC AVENUE DES SPORTS 29556 QUIMPER CEDEX 9 TEL.02.98.64.77.00- FAX 02.98.52.06.47			

CODE COMMERCIAL
W381515

ARRIVEE D'EAU COMMANDEE EN FACADE (X051521)
ALLUMAGE ELECTRIQUE (X901501)*



P321502T_éclaté	C	PLANCHA GAZ (9 kW) CELTIC	
☆☆☆☆	FOLIO	OPTION ARRIVEE D'EAU COMMANDEE EN FACADE	
CAPIC	4/4	Plan réalisé le	26/08/2009 Par : Y.Champion
		Dernière date de modif :	04/10/2017 Par : V.Le Guen
SA CAPIC AVENUE DES SPORTS 29556 QUIMPER CEDEX 9 TEL:02.98.64.77.00- FAX 02.98.52.06.47			

