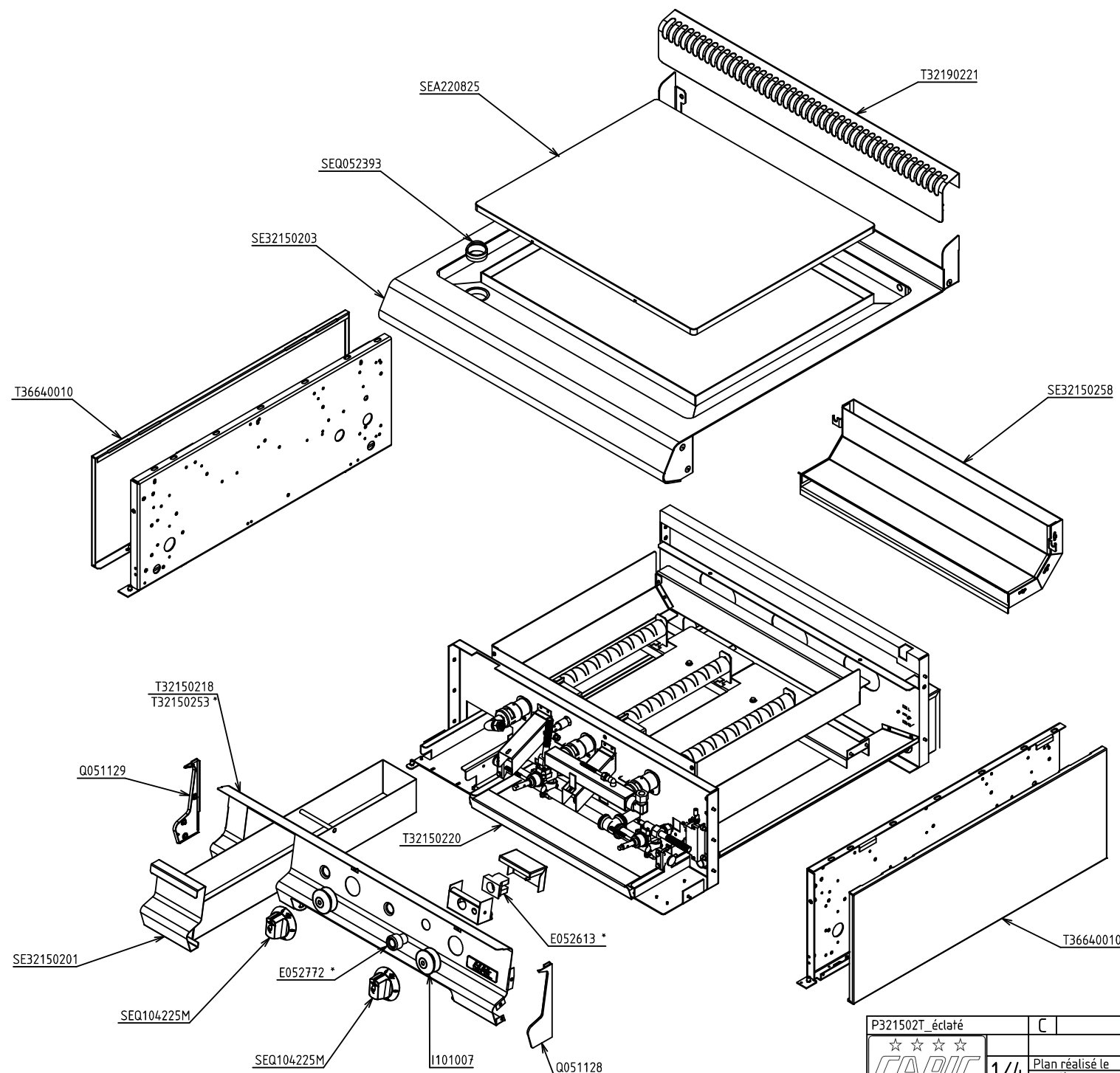


CODE COMMERCIAL

W381515

ALLUMAGE ELECTRIQUE (X901501)*



P321502T_éclaté		C	PLANCH GAZ (9 kW) CELTIC	
<div>☆☆☆☆</div> <div>CAPIC</div>			FACADE 800	
1/4		Plan réalisé le	26/08/2009	Par : Y.Champion
		Dernière date de modif :	04/10/2017	Par : V.Le Guen
SA CAPIC AVENUE DES SPORTS 29556 QUIMPER CEDEX 9 TEL.02.98.64.77.00- FAX 02.98.52.06.47				

W381515

Exploded view diagram of a mechanical assembly, likely a conveyor system component. The diagram shows various parts and their assembly relationships, with labels for specific components:

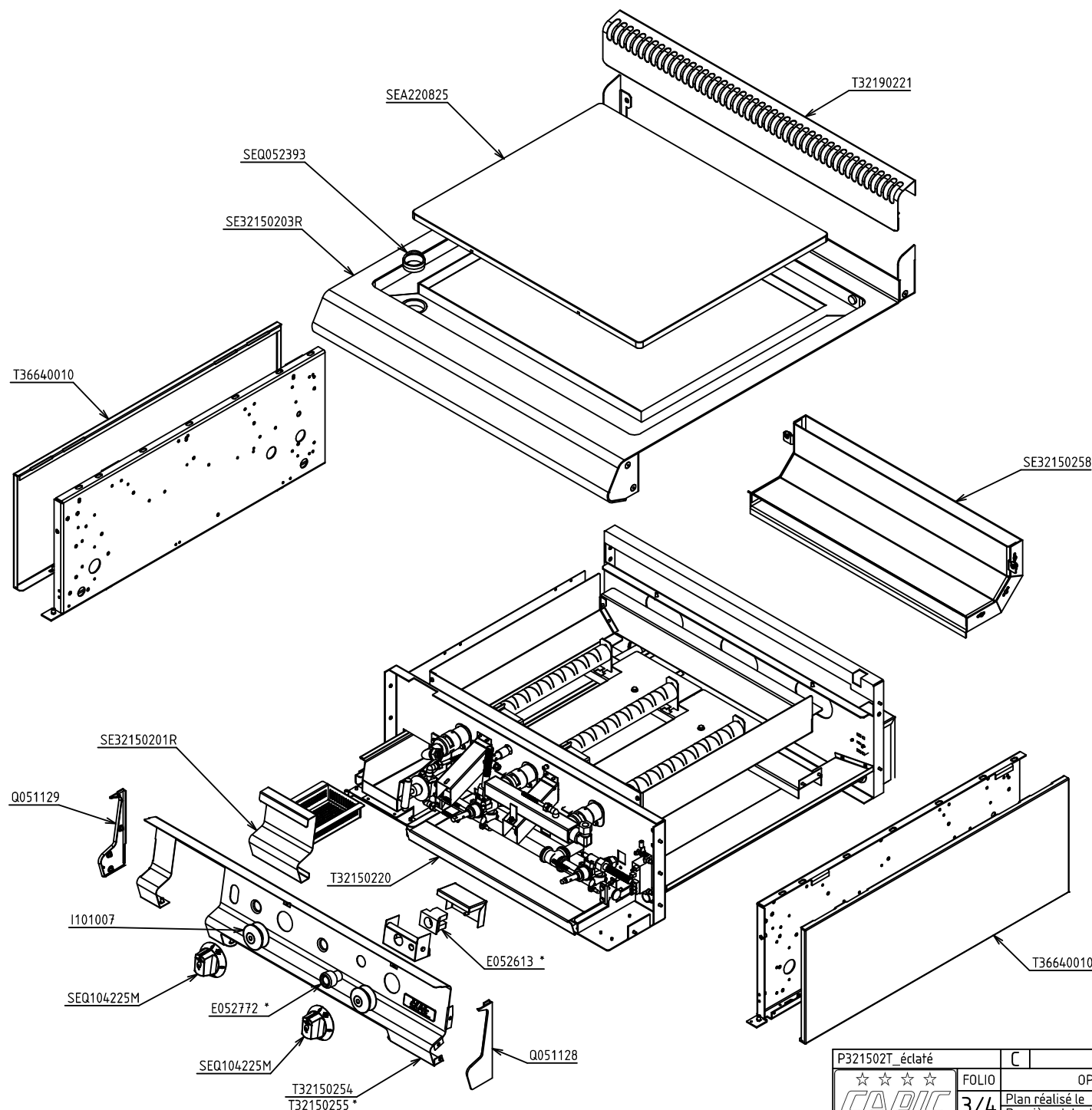
- Top Left:** G203025 (long roller), G206325 GN, G206303 BP (roller end components).
- Top Right:** G207529, G206932 GN, G206925 BP, G207534 * (mounting plate assembly), G40100 (roller end component), G207532 (roller end component).
- Middle Left:** G102035 (roller end component), G202062 GN, G206946 BP, G202060, SE32150263 (mounting plate), G206325 GN, G206303 BP (roller end component).
- Middle Right:** G203025 (long roller), G206325 GN, G206303 BP (roller end component), K400210 (roller end component), SE32150260 (mounting plate).
- Bottom Left:** G102004 (roller end component), SE32150269 (mounting plate), G304047 (roller end component), E052613 * (roller end component), E050505 * (roller end component).
- Bottom Center:** G102008 (roller end component), G102035 (roller end component), G304040 (roller end component), I101007 (roller end component), SEQ104225M (roller end component).
- Bottom Right:** E050505 * (roller end component), G203025 (long roller), G206325 GN, G206303 BP (roller end component), K400210 (roller end component), SE32150260 (mounting plate).

P321502T_éclairé		C	PLANCHAZ GAZ (9 kW) CELTIC	
☆☆☆☆ CAPIC	FOLIO	FACADE 800 - ENSEMBLE GAZ		
2/4	Plan réalisé le	26/08/2009	Par	Y.Champion
	Dernière date de modif.	04/10/2017	Par	V.Le Guen
SA CAPIC AVENUE DES SPORTS 29556 QUIMPER CEDEX 9 TEL.02.98.64.77.00- FAX 02.98.52.06.47				

CODE COMMERCIAL

W381515

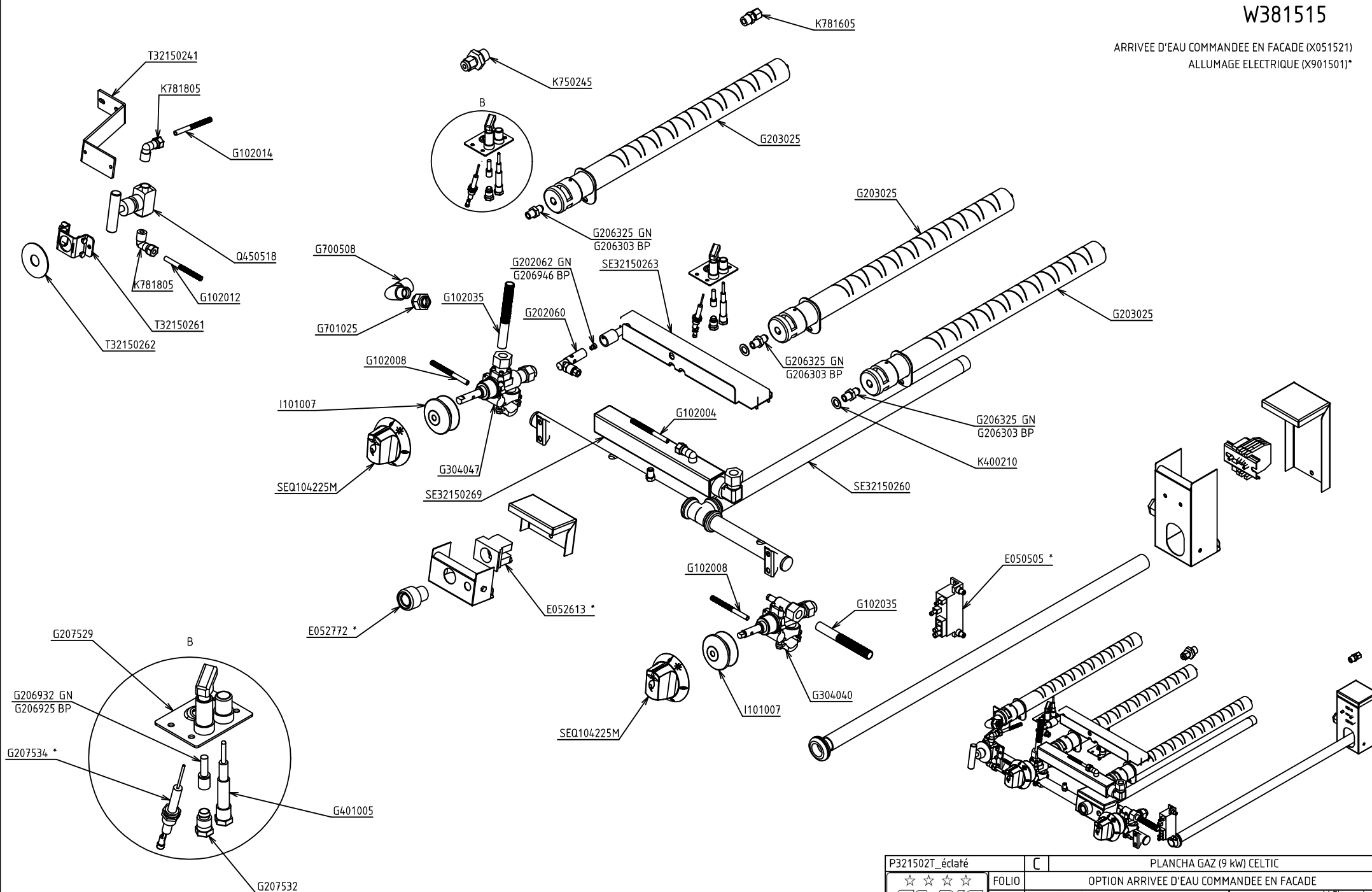
ARRIVEE D'EAU COMMANDEE EN FACADE (X051521)
ALLUMAGE ELECTRIQUE (X901501)*



P321502T_éclaté	C	PLANCHA GAZ (9 kW) CELTIC	
☆☆☆☆	FOLIO	OPTION ARRIVEE D'EAU COMMANDEE EN FACADE	
CAPIC	3/4	Plan réalisé le	26/08/2009 Par : Y.Champion
		Dernière date de modif :	04/10/2017 Par : V.Le Guen
SA CAPIC AVENUE DES SPORTS 29556 QUIMPER CEDEX 9 TEL.02.98.64.77.00- FAX 02.98.52.06.47			

CODE COMMERCIAL
W381515

ARRIVEE D'EAU COMMANDEE EN FACADE (X051521)
ALLUMAGE ELECTRIQUE (X901501)*



P321502*_éclaté		C	PLANCHA GAZ (9 kW) CELTIC	
☆☆☆☆ CAPIC	FOLIO	OPTION ARRIVEE D'EAU COMMANDEE EN FACADE		
4/4	Plan réalisé le	26/08/2009	Par	Y.Champion
	Dernière date de modif :	04/10/2017	Par	V.Le Guen
SA CAPIC AVENUE DES SPORTS 29556 QUIMPER CEDEX 9 TEL.02.98.64.77.00- FAX 02.98.52.06.47				