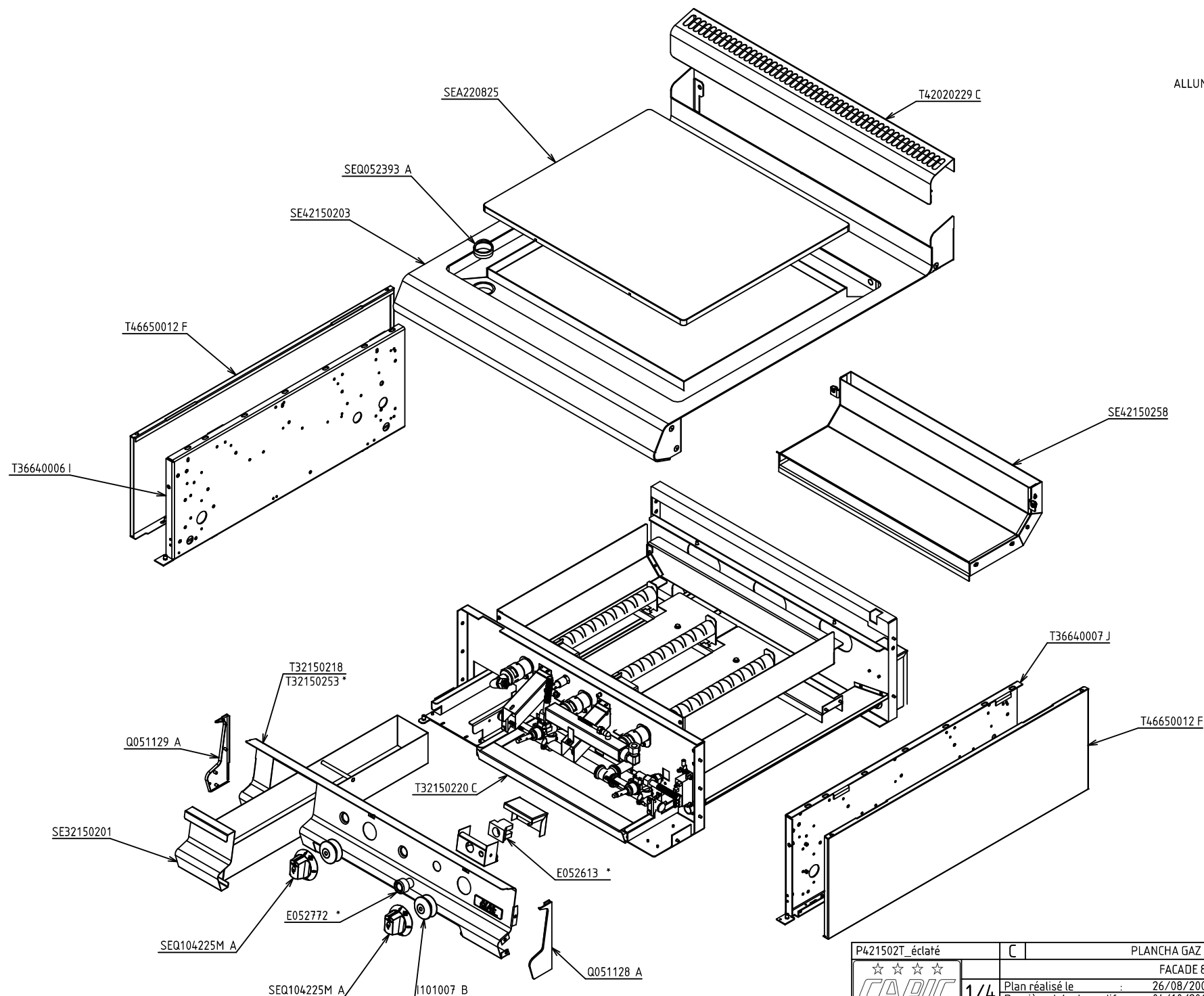


CODE COMMERCIAL

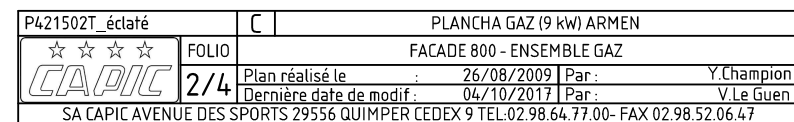
W291515

ALLUMAGE ELECTRIQUE (X901501)\*



P421502T_éclaté		C	PLANCHA GAZ (9 kW) ARMEN	
<div>☆☆☆☆</div> <div>CAPIC</div>			FACADE 800	
1/4		Plan réalisé le	26/08/2009	Par : Y.Champion
		Dernière date de modif :	04/10/2017	Par : V.Le Guen
SA CAPIC AVENUE DES SPORTS 29556 QUIMPER CEDEX 9 TEL:02.98.64.77.00- FAX 02.98.52.06.47				

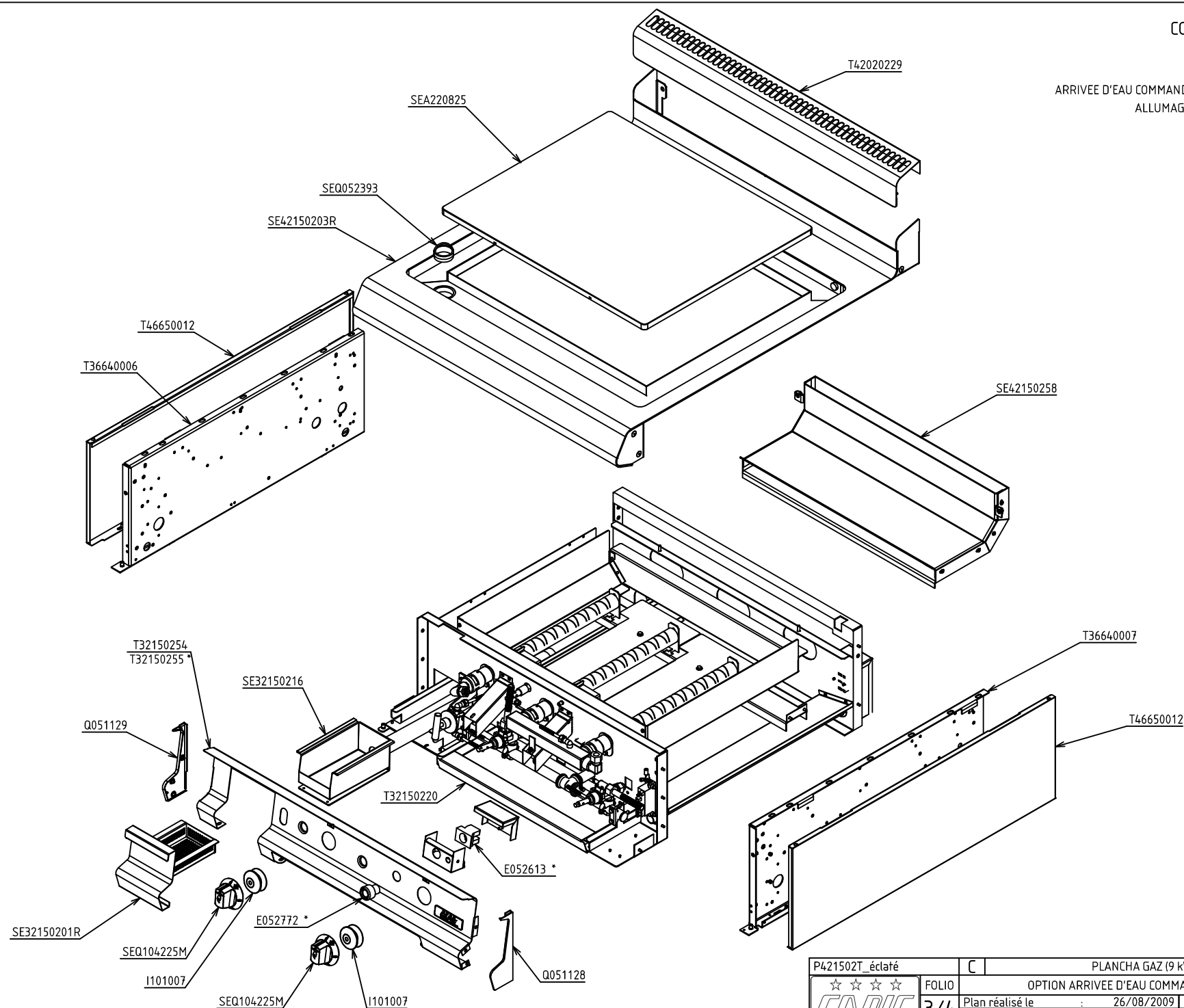
ALLUMAGE ELECTRIQUE (X901501)\*



CODE COMMERCIAL

W291515

ARRIVEE D'EAU COMMANDEE EN FACADE (X051521)  
ALLUMAGE ELECTRIQUE (X901501)\*



P421502T_éclaté	C	PLANCHA GAZ (9 kw) ARMEN	
☆☆☆☆	FOLIO	OPTION ARRIVEE D'EAU COMMANDEE EN FACADE	
CAPIC	3/4	Plan réalisé le	26/08/2009   Par : Y.Champion
		Dernière date de modif :	04/10/2017   Par : V.Le Guen
SA CAPIC AVENUE DES SPORTS 29556 QUIMPER CEDEX 9 TEL:02.98.64.77.00- FAX 02.98.52.06.47			

W291515

Exploded view diagram of a gas burner assembly. The diagram shows the main burner assembly, including the burner head, gas valve, and control components. Key parts are labeled with part numbers:

- Gas Valve:** G102004, G102008, G102035, G102036, G102037, G102038, G102039, G102040, G102041, G102042, G102043, G102044, G102045, G102046, G102047, G102048, G102049, G102050, G102051, G102052, G102053, G102054, G102055, G102056, G102057, G102058, G102059, G102060, G102061, G102062, G102063, G102064, G102065, G102066, G102067, G102068, G102069, G102070, G102071, G102072, G102073, G102074, G102075, G102076, G102077, G102078, G102079, G102080, G102081, G102082, G102083, G102084, G102085, G102086, G102087, G102088, G102089, G102090, G102091, G102092, G102093, G102094, G102095, G102096, G102097, G102098, G102099, G102100, G102101, G102102, G102103, G102104, G102105, G102106, G102107, G102108, G102109, G102110, G102111, G102112, G102113, G102114, G102115, G102116, G102117, G102118, G102119, G102120, G102121, G102122, G102123, G102124, G102125, G102126, G102127, G102128, G102129, G102130, G102131, G102132, G102133, G102134, G102135, G102136, G102137, G102138, G102139, G102140, G102141, G102142, G102143, G102144, G102145, G102146, G102147, G102148, G102149, G102150, G102151, G102152, G102153, G102154, G102155, G102156, G102157, G102158, G102159, G102160, G102161, G102162, G102163, G102164, G102165, G102166, G102167, G102168, G102169, G102170, G102171, G102172, G102173, G102174, G102175, G102176, G102177, G102178, G102179, G102180, G102181, G102182, G102183, G102184, G102185, G102186, G102187, G102188, G102189, G102190, G102191, G102192, G102193, G102194, G102195, G102196, G102197, G102198, G102199, G102200, G102201, G102202, G102203, G102204, G102205, G102206, G102207, G102208, G102209, G102210, G102211, G102212, G102213, G102214, G102215, G102216, G102217, G102218, G102219, G102220, G102221, G102222, G102223, G102224, G102225, G102226, G102227, G102228, G102229, G102230, G102231, G102232, G102233, G102234, G102235, G102236, G102237, G102238, G102239, G102240, G102241, G102242, G102243, G102244, G102245, G102246, G102247, G102248, G102249, G102250, G102251, G102252, G102253, G102254, G102255, G102256, G102257, G102258, G102259, G102260, G102261, G102262, G102263, G102264, G102265, G102266, G102267, G102268, G102269, G102270, G102271, G102272, G102273, G102274, G102275, G102276, G102277, G102278, G102279, G102280, G102281, G102282, G102283, G102284, G102285, G102286, G102287, G102288, G102289, G102290, G102291, G102292, G102293, G102294, G102295, G102296, G102297, G102298, G102299, G102300, G102301, G102302, G102303, G102304, G102305, G102306, G102307, G102308, G102309, G102310, G102311, G102312, G102313, G102314, G102315, G102316, G102317, G102318, G102319, G102320, G102321, G102322, G102323, G102324, G102325, G102326, G102327, G102328, G102329, G102330, G102331, G102332, G102333, G102334, G102335, G102336, G102337, G102338, G102339, G102340, G102341, G102342, G102343, G102344, G102345, G102346, G102347, G102348, G102349, G102350, G102351, G102352, G102353, G102354, G102355, G102356, G102357, G102358, G102359, G102360, G102361, G102362, G102363, G102364, G102365, G102366, G102367, G102368, G102369, G102370, G102371, G102372, G102373, G102374, G102375, G102376, G102377, G102378, G102379, G102380, G102381, G102382, G102383, G102384, G102385, G102386, G102387, G102388, G102389, G102390, G102391, G102392, G102393, G102394, G102395, G102396, G102397, G102398, G102399, G102400, G102401, G102402, G102403, G102404, G102405, G102406, G102407, G102408, G102409, G102410, G102411, G102412, G102413, G102414, G102415, G102416, G102417, G102418, G102419, G102420, G102421, G102422, G102423, G102424, G102425, G102426, G102427, G102428, G102429, G102430, G102431, G102432, G102433, G102434, G102435, G102436, G102437, G102438, G102439, G102440, G102441, G102442, G102443, G102444, G102445, G102446, G102447, G102448, G102449, G102450, G102451, G102452, G102453, G102454, G102455, G102456, G102457, G102458, G102459, G102460, G102461, G102462, G102463, G102464, G102465, G102466, G102467, G102468, G102469, G102470, G102471, G102472, G102473, G102474, G102475, G102476, G102477, G102478, G102479, G102480, G102481, G102482, G102483, G102484, G102485, G102486, G102487, G102488, G102489, G102490, G102491, G102492, G102493, G102494, G102495, G102496, G102497, G102498, G102499, G102500, G102501, G102502, G102503, G102504, G102505, G102506, G102507, G102508, G102509, G102510, G102511, G102512, G102513, G102514, G102515, G102516, G102517, G102518, G102519, G102520, G102521, G102522, G102523, G102524, G102525, G102526, G102527, G102528, G102529, G102530, G102531, G102532, G102533, G102534, G10

P421502*_éclaté		C	PLANCHAS GAZ (9 kW) ARMEN	
☆☆☆☆ <b>CAPIC</b>	FOLIO	OPTION ARRIVEE D'EAU COMMANDEE EN FACADE		
4/4	Plan réalisé le	26/08/2009	Par	Y.Champion
	Dernière date de modif.	04/10/2017	Par	V.Le Guen
SA CAPIC AVENUE DES SPORTS 29556 QUIMPER CEDEX 9 TEL:02.98.64.77.00- FAX 02.98.52.06.47				