



### Characteristics

External dimensions : 1500 X 1255 X 965/1015

Back edge

Front without any visible screw

70mm space between kettle and pillars

for an easy cleaning.

Full drain at 400mm off the ground

18.10 stainless steel

Folded top edges - 2mm thickness

Planetary finish

2 mm thickness structure

Pre-equipped for energy optimizer

### Top

316L stainless steel tank

Wide spout

Tank dimensions : Ø750x570

Net capacity : 225 l.

Heating by dust protected high-performance  
heating elements

Maxi pressure into the double cover: 1 bar (120°C)

Thermostatic steam trap

Hot/Cold water supply

Water meter

Heating stop while tilting

Manually operating mode or from

recorded recipes

Differed start and timer

Removable mixing arm with PTFE scrapers

Programmable cycle, speed and direction of rotation

Control by color touch screen

Counterbalanced and doubled lid with a food trap

Flat tank base - 5mm thickness

Security valve

Automatic regulation of the water level

Control of temperature into the double jacket

+ temperature of the product

with ingredient trapdoor

Heating power: 35 kW

### Options :

### Base unit

Tilting by electric cylinders (IP66 without maintenance)

protection from external aggressions

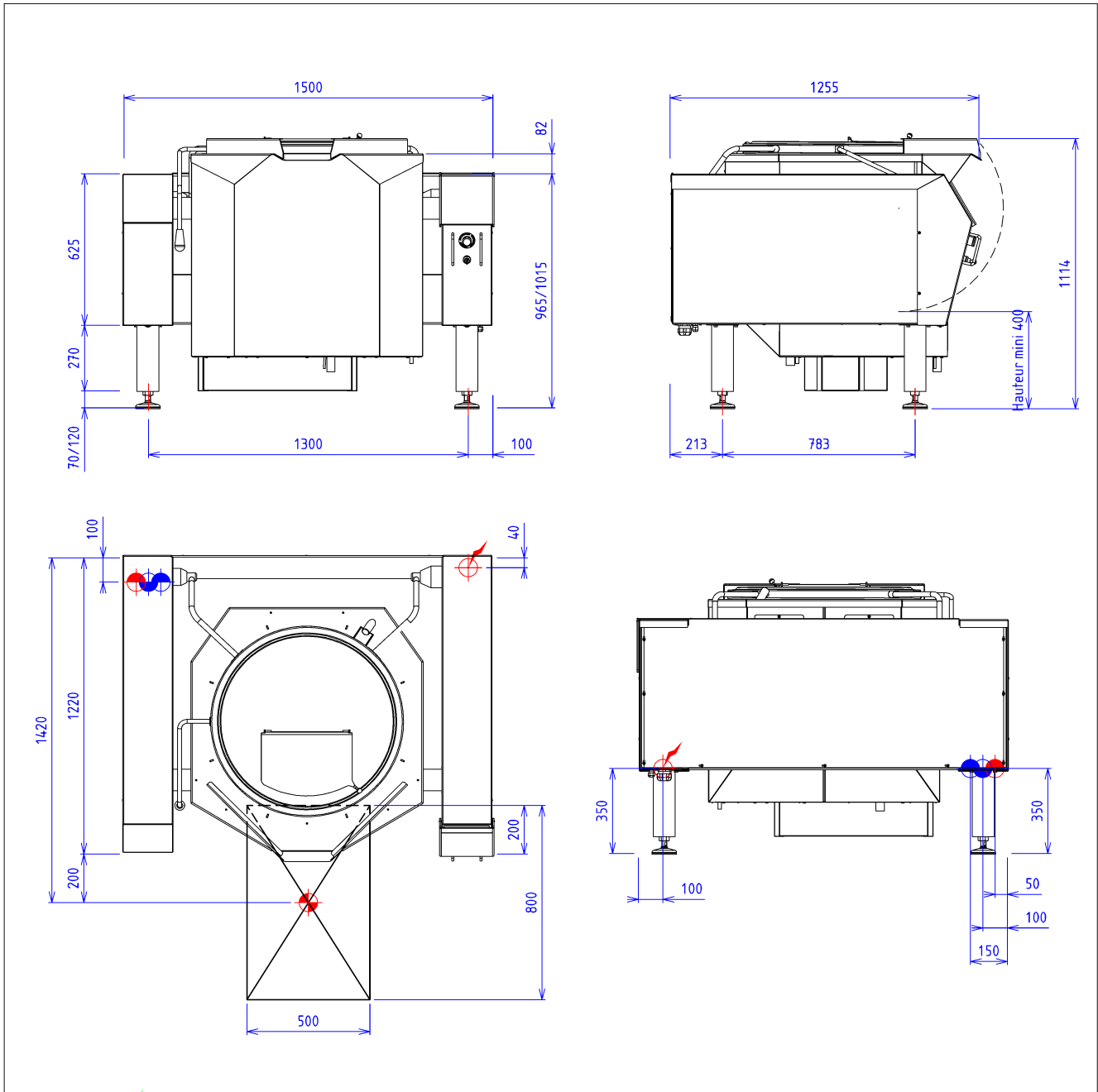
Tilting control for a real

ease of use, hygiene and safety

Tilting stop in any position of tank

Integration in the pillars allowing complete

cooling of the double skin by circulation of the water ne (X238005)  
water jet with extendable hose (X238006)  
draining valve 40/49 on the front panel of the kettle (X238007)  
rs output for traceability (X238009)  
stand for tilting systemat 700 mm of the ground (X238010)  
draining rack (X238011)

**ELECTRIC**

Electric power : 37.00kW

Elec Réservation : INTERNAL TERMINAL BOARD - Elec fitting : 400V THREE

Electrical devices standard to the norm EN 60-335

**WATER/AIR**

Hot water fitting :15/21 FLEXIBLE



Cold water fitting :15/21 FLEXIBLE



Double jacket connection in softened water :15/21 FLEXIBLE

Prévoir un régulateur de pression réglé à 1.8 Bar maxi pour le circuit de la double enveloppe