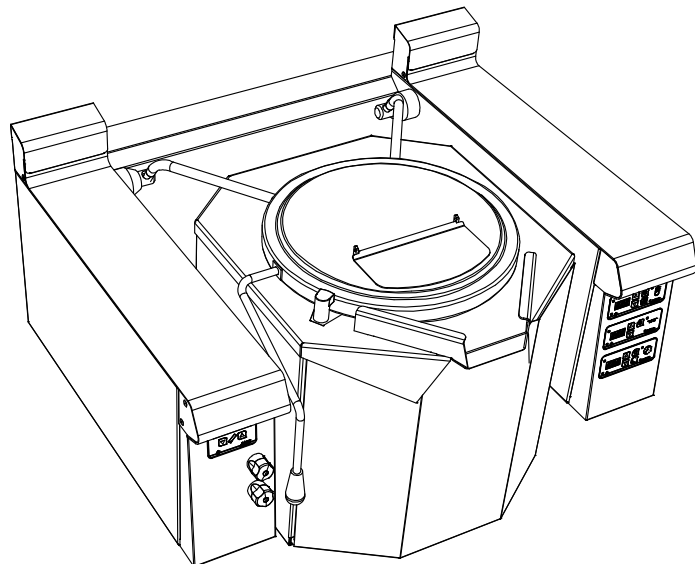




The reference in catering equipment

PILOTE KETTLE 80L ELEC.  
BAIN-MARIE - HW/CW SUPPLY

## **PILOTE FRONT 1200**



### **Characteristics :**

External dimensions : 1200x1030x825  
Top in brushed 18.10 stainless steel  
Top thickness 3 mm  
body 1 mm in brushed stainless steel  
Structure 2 mm in stainless steel  
folded front edge radius 20 mm  
Back edge forming a chimney cover  
Front without any visible screw  
70mm space between tank and pillars  
for an easy cleaning.

### **Descriptions :**

1 mm stainless steel double lid  
equipped with echtermann hinge  
Tank and double skin in stainless steel 18.10  
welded on the top  
2mm thickness for the ferrule and 3mm for the bottom  
Ring thickness 2mm  
Elliptical bottom 3mm  
Dimensions (ØxP) : 500x480  
net capacity : 80 l.  
Power: 15 kW  
Lid handle with insulated end  
HW/CW feeding by fixed tap  
controlled from front by 1/4 turn tap  
with ceramic components  
Immersed heater  
immersed in the double-layers  
Double skinned 450grs with  
pressure valve 500 grs  
Thermostatic regulation  
4 speed rotations programmed  
Volumetric watermeter  
Overheating limiter  
Tilting of the tank 300mm from the ground  
Removable mixing arm with bottom and  
sides PTFE scrapers

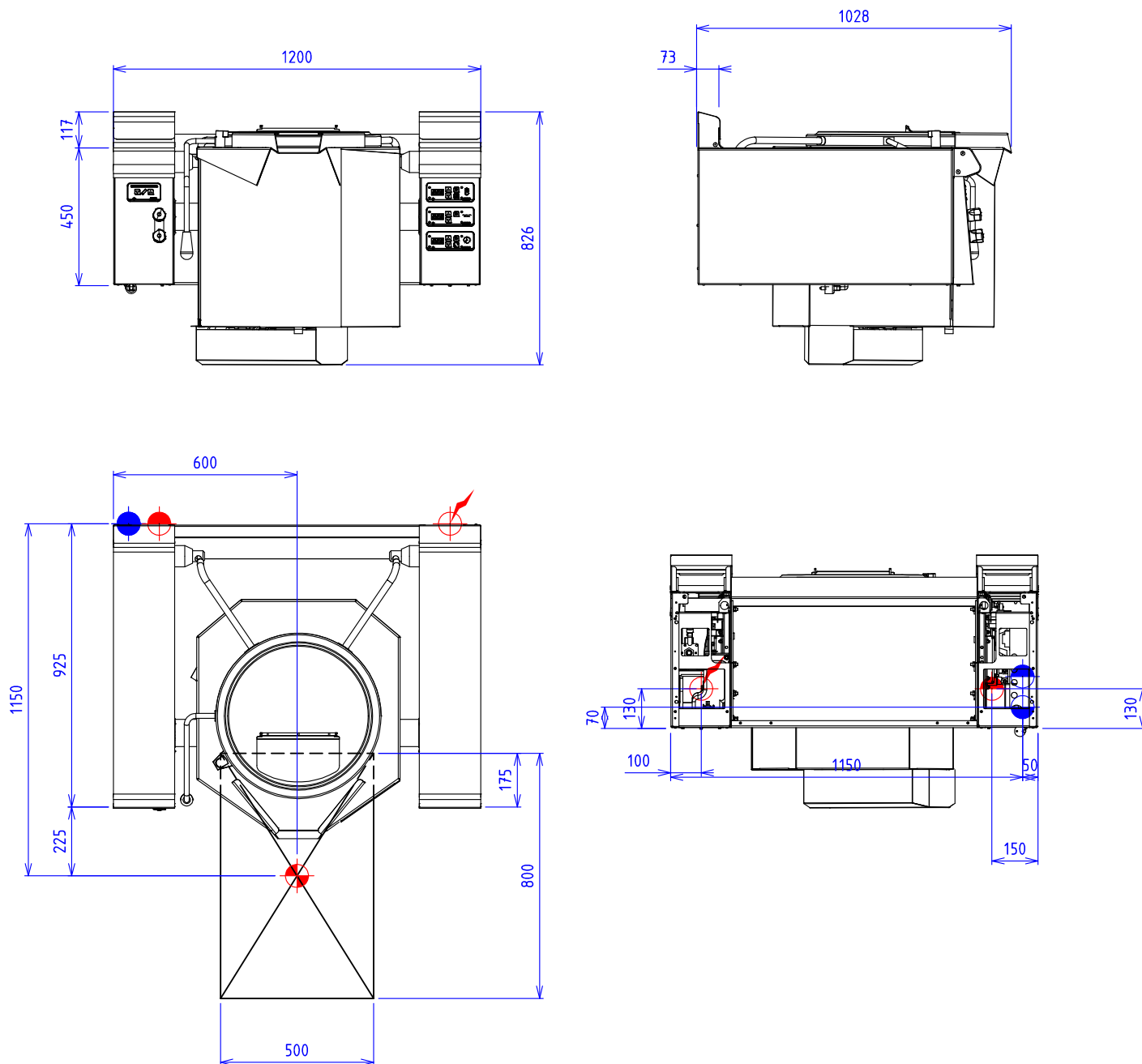
### **Specifications :**

Tilting by electric cylinders  
Protection class IP66, no maintenance  
Integration in the right pillar allowing complete  
protection from external aggressions  
Tilting controller allows reliability,  
ease of use, hygiene and safety  
stop at any tank




### **Options :**

450 height adjustable feet 900/930  
Water jet with extendable hose (X296021)  
Drining tap 40/49 (X296024)  
Water feeding with digital control (X296023)

## PILOTE KETTLE 80L ELEC. BAIN-MARIE - HW/CW SUPPLY



**ELEC :**  Electric power : 15 kW Elec reservation : internal wiring Elec fitting : 400Vx3+N+T

**WATER :**  Hot water fitting: 15/21 socket  
 Cold water fitting: 15/21 socket  
 Connection jacket in soft water: 15/21 socket

Provide a pressure regulator set at 1.5 bar max for the jacket

Electrical devices standard to the norm EN 60-335