



### Characteristics

External dimensions : 1354 X 925 X 450  
 Stainless steel top 18.10 planetary planetary brushed finish  
 Top thickness : 3 mm  
 body 1 mm in planetary brushed stainless steel  
 Structure : 2 mm in stainless steel  
 folded front edge radius 20 mm  
 Back edge forming a chimney cover  
 Front without any visible screw  
 70mm space between kettle and pillars  
 for an easy cleaning.

### Descriptions

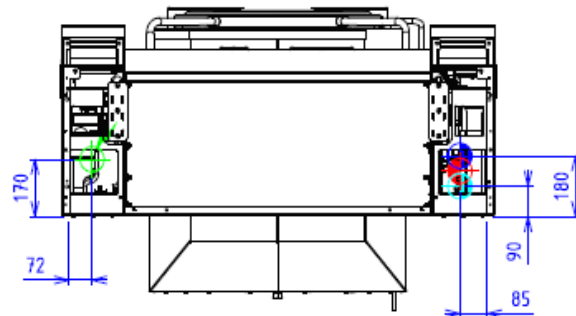
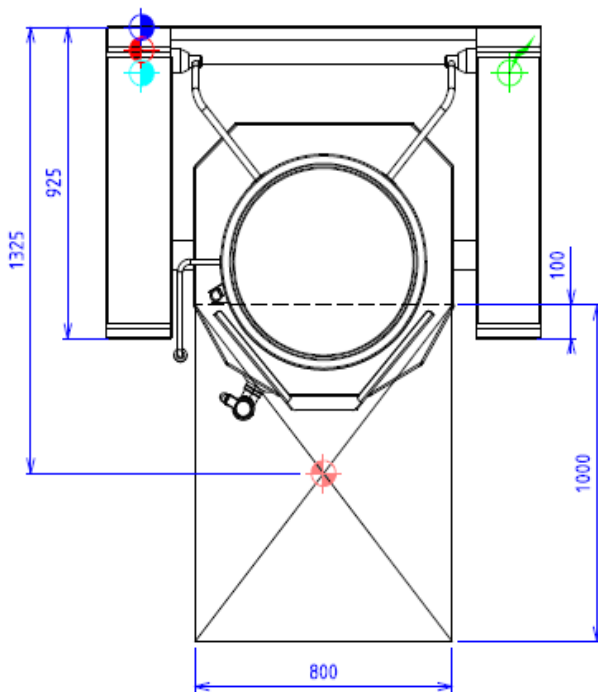
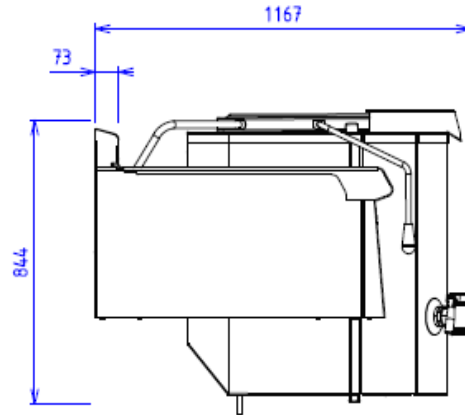
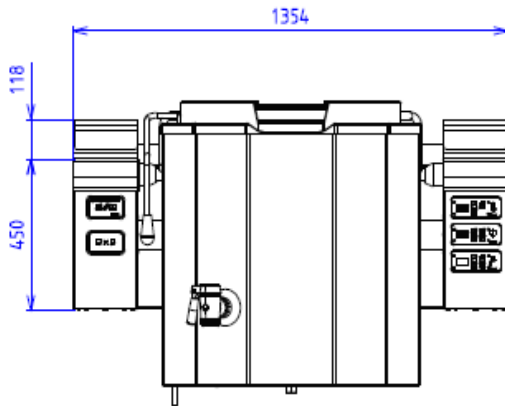
1 mm stainless steel double lid  
 equipment with echtermann hinge  
 Tank and double layer in stainless steel 18.10  
 welded on the top  
 2mm thickness for the ferrule and 3mm for the bottom  
 Lid handle with insulated end  
 Drain Valve 40/49 with retractable handle  
 Immersed heater  
 into the double skin  
 Electronic level controller  
 Net capacity : 150 l.  
 Power : 18 kW  
 Removable strainer with level indication  
 Hot/Cold water supply  
 Volumetric watermeter  
 Heating stop while tilting  
 Digital sequential regulation  
 Differred start + timer  
 Double skinned 350grs with  
 pressure valve 500 grs  
 Dimensions (ØxP) : 600x570

### Specification

Tilting by electric cylinders (IP66 without maintenance)  
 Integration in the left pillar allowing complete  
 protection from external aggressions  
 Tilting control for a real  
 ease of use, hygiene and safety  
 Tilting stop in any position of tank

### Options :

450 stainless steel feetheight 900/930 (X296001)  
 regulation by sensor into the tank (X296031)  
 support brackets for pilotethe pair (X299002)  
 side edge straight open for assembly machineon the right side (X296041)  
 side edge straight open for assembly machineon the left side (X296042)



## ELECTRIC



Electric power : 18.00kW

Elec Réservation : INTERNAL TERMINAL BOARD - Elec fitting  
: 400V THREE phases + NEUTRAL

Electrical devices standard to the norm EN 60-335

## WATER/AIR



Hot water fitting :15/21 FLEXIBLE



Cold water fitting :15/21 FLEXIBLE



Double jacket connection in softened water :15/21 FLEXIBLE

Prévoir un régulateur de pression réglé à 1.8 Bar maxi pour le circuit de la double enveloppe