

## CATERING RANGE ABM20 TURBOFRIT ELEC. - MANUAL RAISING



### Characteristics

External dimensions : 400 X 1000 X 900  
 Stainless steel top 18.10 planetary planetary brushed finish  
 Top thickness : 3 mm  
 body 1 mm in planetary brushed stainless steel  
 Structure : 2 mm in stainless steel  
 Stand with composite feet of 150 adjustable in height  
 folded front edge radius 20 mm  
 Back edge forming a chimney cover  
 Front without any visible screw

### Top

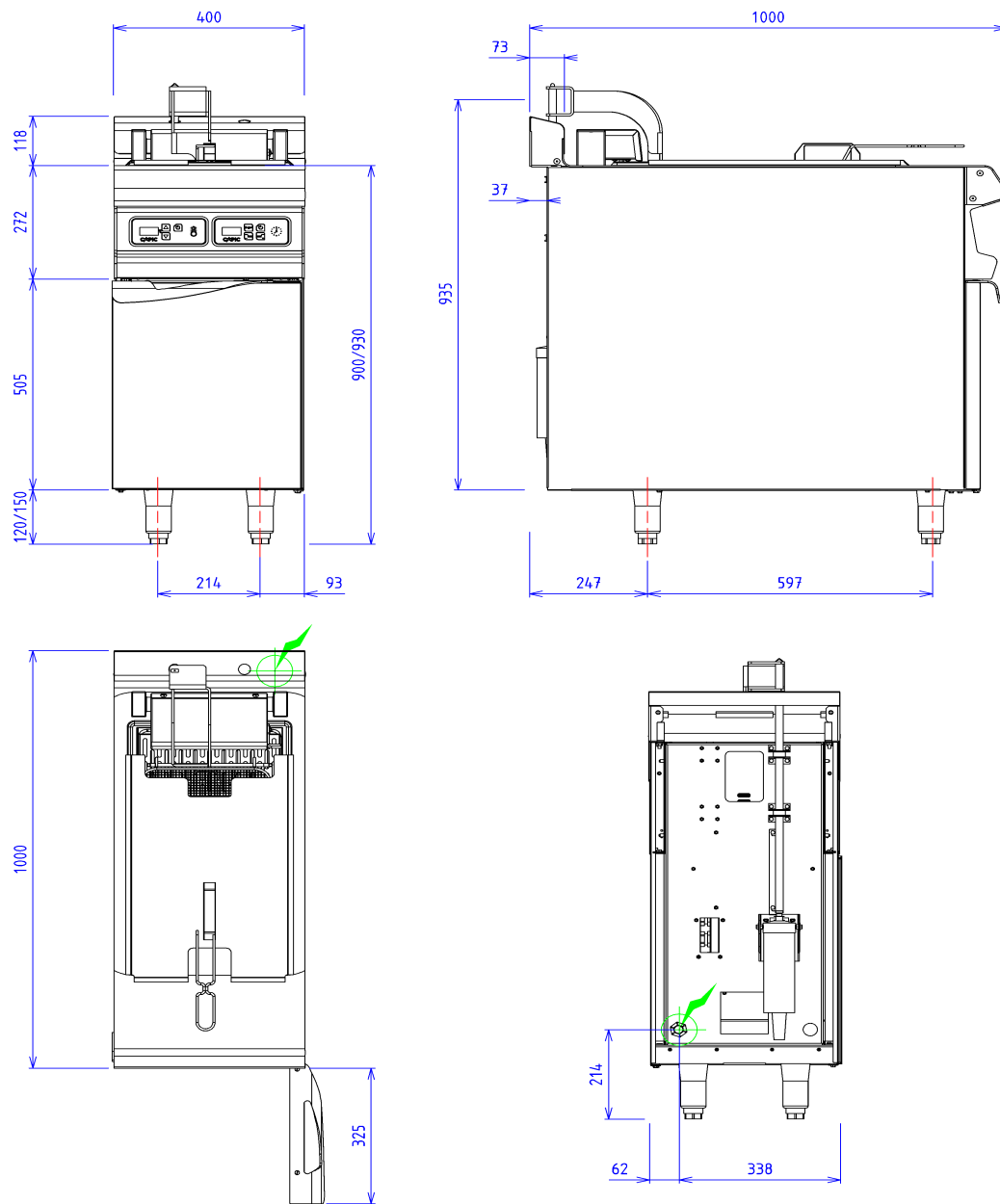
Net 20L stainless steel tank thickness 15/10  
 Power : 20 kW  
 Efficiency: 55 kg/h 6x6 frozen french fries  
 Thermostat 100-180°C positive security 220°C  
 Digital control with oil melting system  
 Heating by oblong resistances  
 reinforced and tilting  
 Draining by 1/4 turn tap diam 20/27  
 1 stainless steel basket dimension : 360x285x135  
 Automatic baskets lifting with timer

### Options :

large basket (360x285x135) (X291005)

### Base unit

Construction in stainless steel 18.10  
 Structure 2 mm  
 body 1 mm  
 External dimensions : 400x724x650  
 Front without any visible screw  
 Double skin door  
 Recycling tray in closet



## ELECTRIC



Electric power : 20.50kW

Elec Réservation : INTERNAL TERMINAL BOARD - Elec fitting  
: 400V THREE + NEUTRAL

Electrical devices standard to the norm EN 60-335