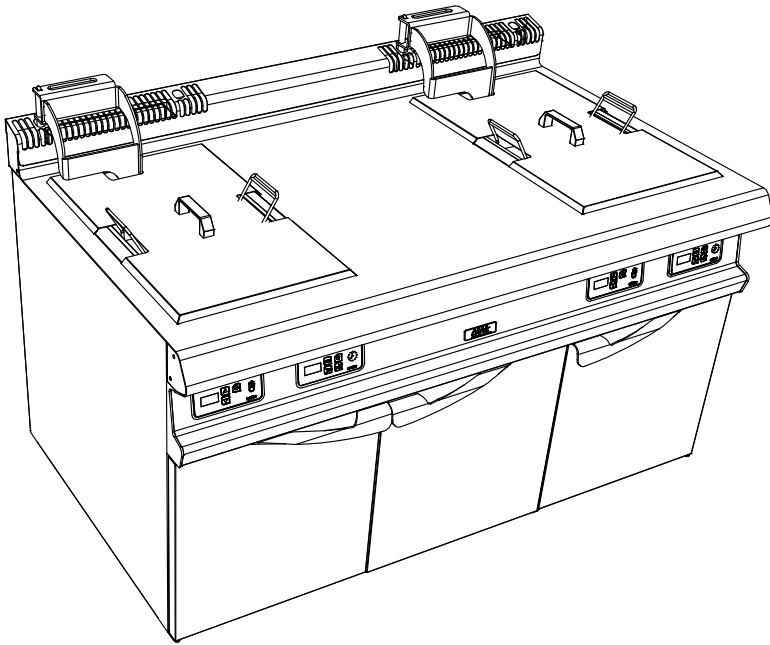


ARMEN AM20 2 TURBOFRIT GAS
CENTRAL NEUTRAL - AUTO RAISING

FRYERS
FRONT 1500



Characteristics :

External dimensions : 1500x925x900/930
Top in brushed 18.10 stainless steel
Top thickness 3 mm
body 1 mm in brushed stainless steel
Structure 2 mm in stainless steel
composite feet de 150 height adjustable
folded front edge radius 20 mm
Back edge forming a chimney cover
Front without any visible screw

Top :

2 Net 30L stainless steel tanks thickness 15/10
Power : 2x30 kW
Efficiency: >100 kg/h 6x6 frozen french fries
Thermostat 100-180°C positive security 220°C
Heating by 4 immersed nozzles and burners
electric ignition
Security pilot and thermocouple
Tank with cold zone + 26/34 draining
2 stainless steel baskets dimension : 500x290x200
Automatic baskets lifting with timer

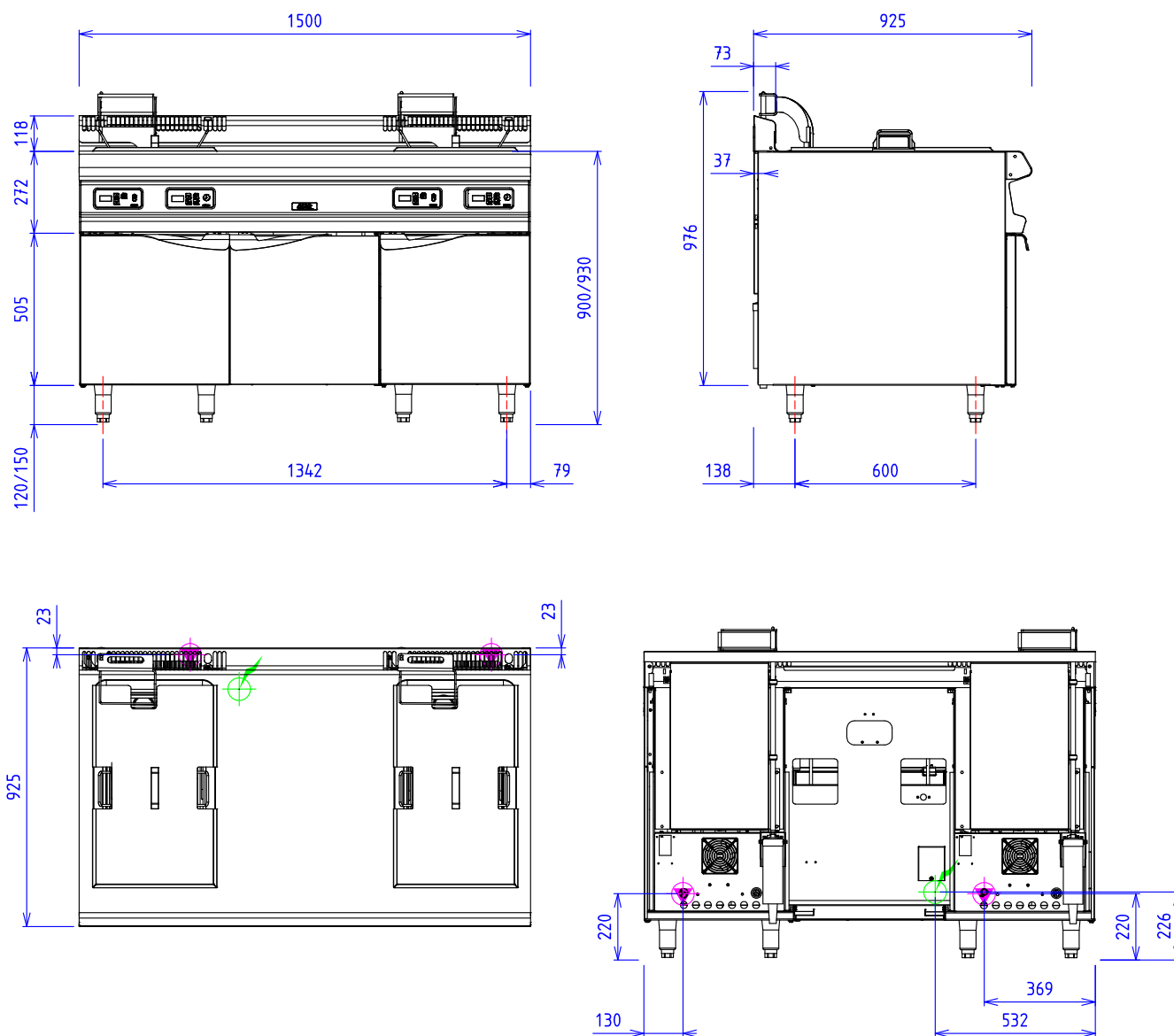
Base unit :

Construction in stainless steel 18.10
Structure 2 mm
body 1 mm
Front without any visible screw
Double skin doors


Options :

Infrared lamp (500W)
for pre-equipped cupboard (W042403)

ARMEN AM20 2 TURBOFRIT GAS CENTRAL NEUTRAL - AUTO RAISING



GAS :  Gas power : 30kW conical 15/21 gas fitting
 Gas power : 30kW conical 15/21 gas fitting

ELEC :  Electric power : 1 kW Elec reservation : internal wiring Elec fitting : 230V Mono+T

Gas devices standard to the norm NF EN 203. EN 437 / Gas Law 2009/142/CE

Electrical devices standard to the norm EN 60-335