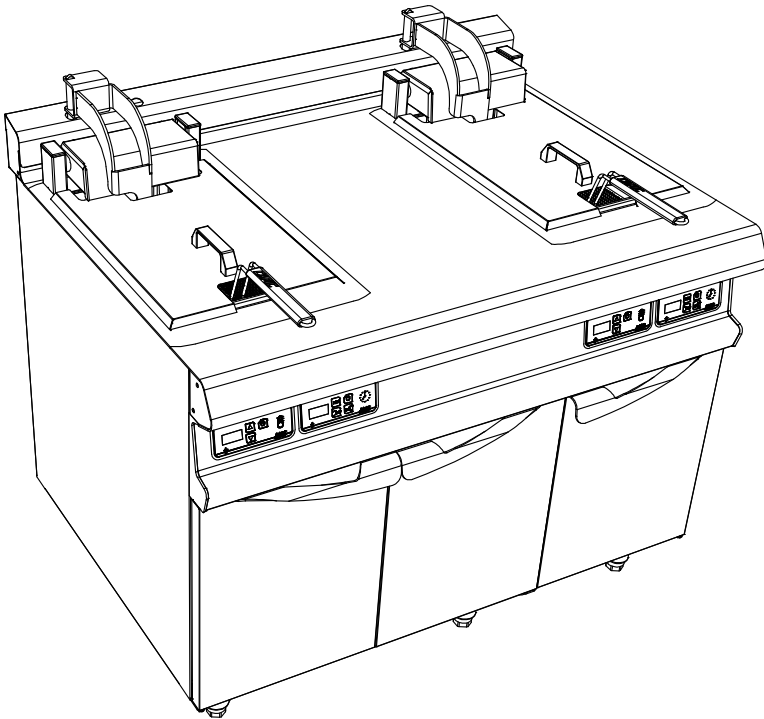


ARMEN AM20 2 TURBOFRIT ELEC
CENTRAL NEUTRAL - AUTO RAISING

FRYERS
FRONT 1200



Characteristics :

External dimensions : 1200x925x900/930
Top in brushed 18.10 stainless steel
Top thickness 3 mm
body 1 mm in brushed stainless steel
Structure 2 mm in stainless steel
composite feet de 150 height adjustable
folded front edge radius 20 mm
Back edge forming a chimney cover
Front without any visible screw

Top :

2 Net 20L stainless steel tanks thickness 15/10
Power : 2x20 kW
Efficiency: >2x50 kg/h 6x6 frozen french fries
Thermostat 100-180°C positive security 220°C
Heating by oblong resistances
reinforced and tilting
Double layer removable for cleaning
Draining by 1/4 turn tap diam 20/27
2 stainless steel baskets dimension : 360x285x135
Automatic baskets lifting with timer

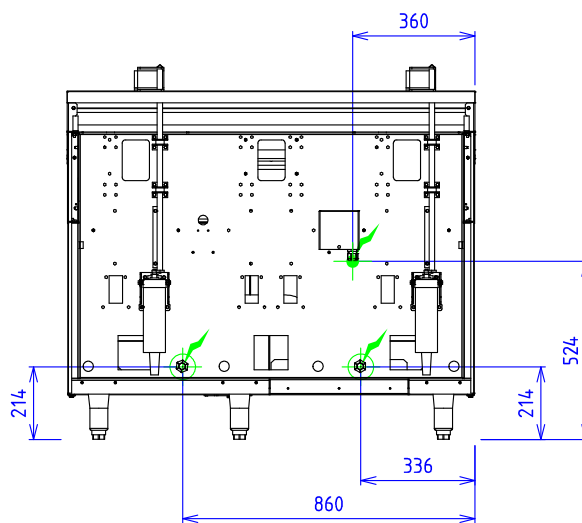
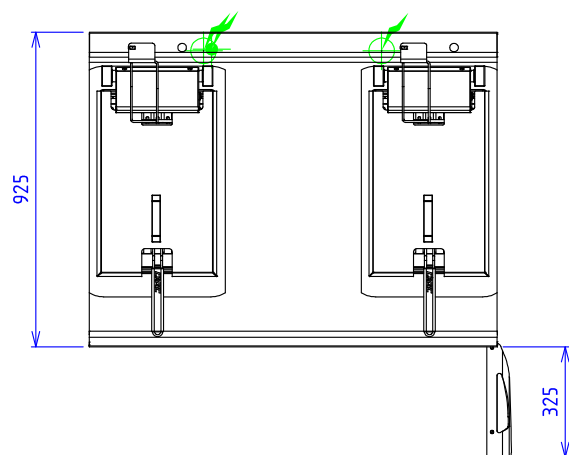
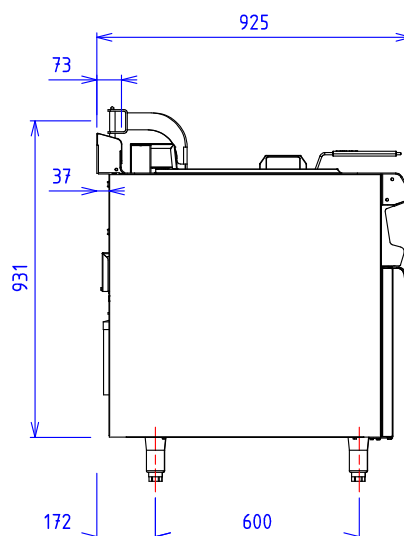
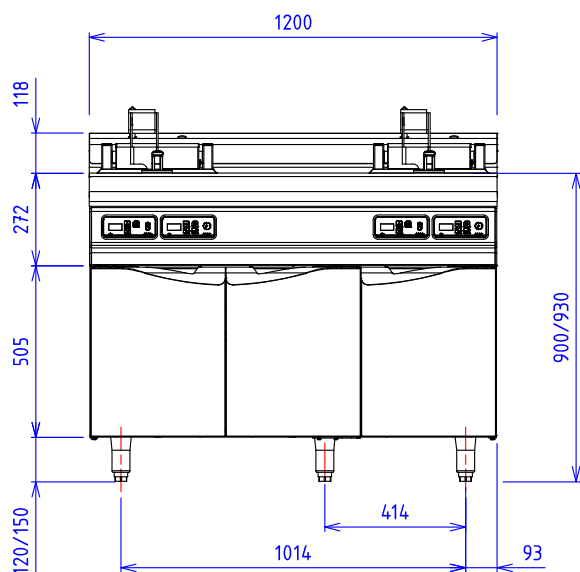
Base unit :




Construction in stainless steel 18.10
Structure 2 mm
body 1 mm
Front without any visible screw
Double skin doors

Options :

Infrared lamp (500W)
for pre-equipped cupboard (W042403)

ARMEN AM20 2 TURBOFRIT ELEC CENTRAL NEUTRAL - AUTO RAISING



- ELEC :**
-  Electric power : 20.5 kW Elec reservation : internal wiring Elec fitting : 400Vx3+N+T
 -  Electric power : 20.5 kW Elec reservation : internal wiring Elec fitting : 400Vx3+N+T
 -  230V Mono +T if infrared ramp option

Electrical devices standard to the norm EN 60-335

The emblems, descriptions and diagrams of this documentation are given for your information and could be modified without notice.