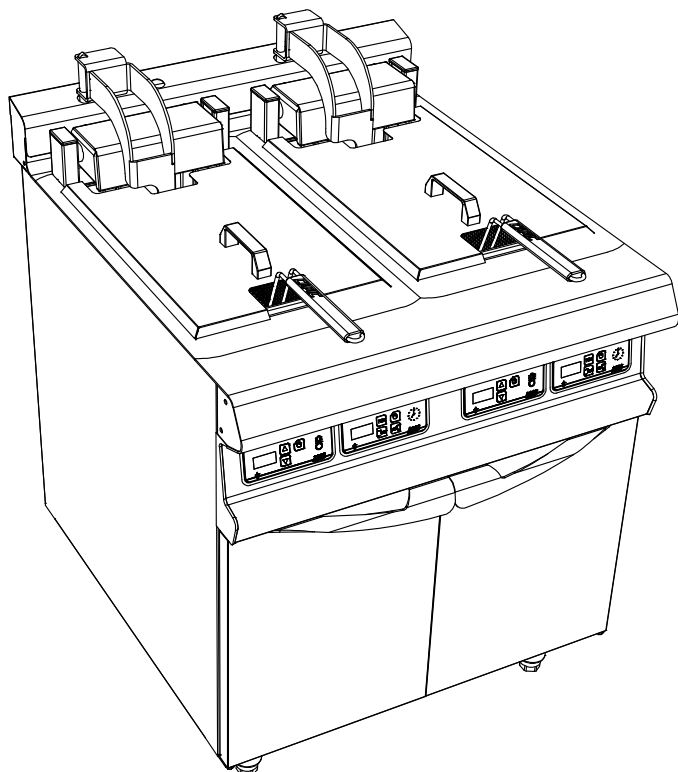


ARMEN AM20 2 TURBOFRIT ELEC
 AUTO RAISING CLOSED CUPBOARD

FRYERS
FRONT 800



Top :

2 Net 20L stainless steel tanks thickness 15/10
 Power : 2x20 kW
 Efficiency: >100 kg/h 6x6 frozen french fries
 Thermostat 100-180°C positive security 220°C
 Heating by oblong resistances
 reinforced and tilting
 Double layer removable for cleaning
 Draining by 1/4 turn tap diam 20/27
 2 stainless steel baskets dimension : 360x285x135
 Digital controls
 Automatic baskets lifting with timer

Characteristics :

External dimensions : 800x925x900/930
 Top in brushed 18.10 stainless steel
 Top thickness 3 mm
 body 1 mm in brushed stainless steel
 Structure 2 mm in stainless steel
 composite feet de 150 height adjustable
 folded front edge radius 20 mm
 Back edge forming a chimney cover
 Front without any visible screw

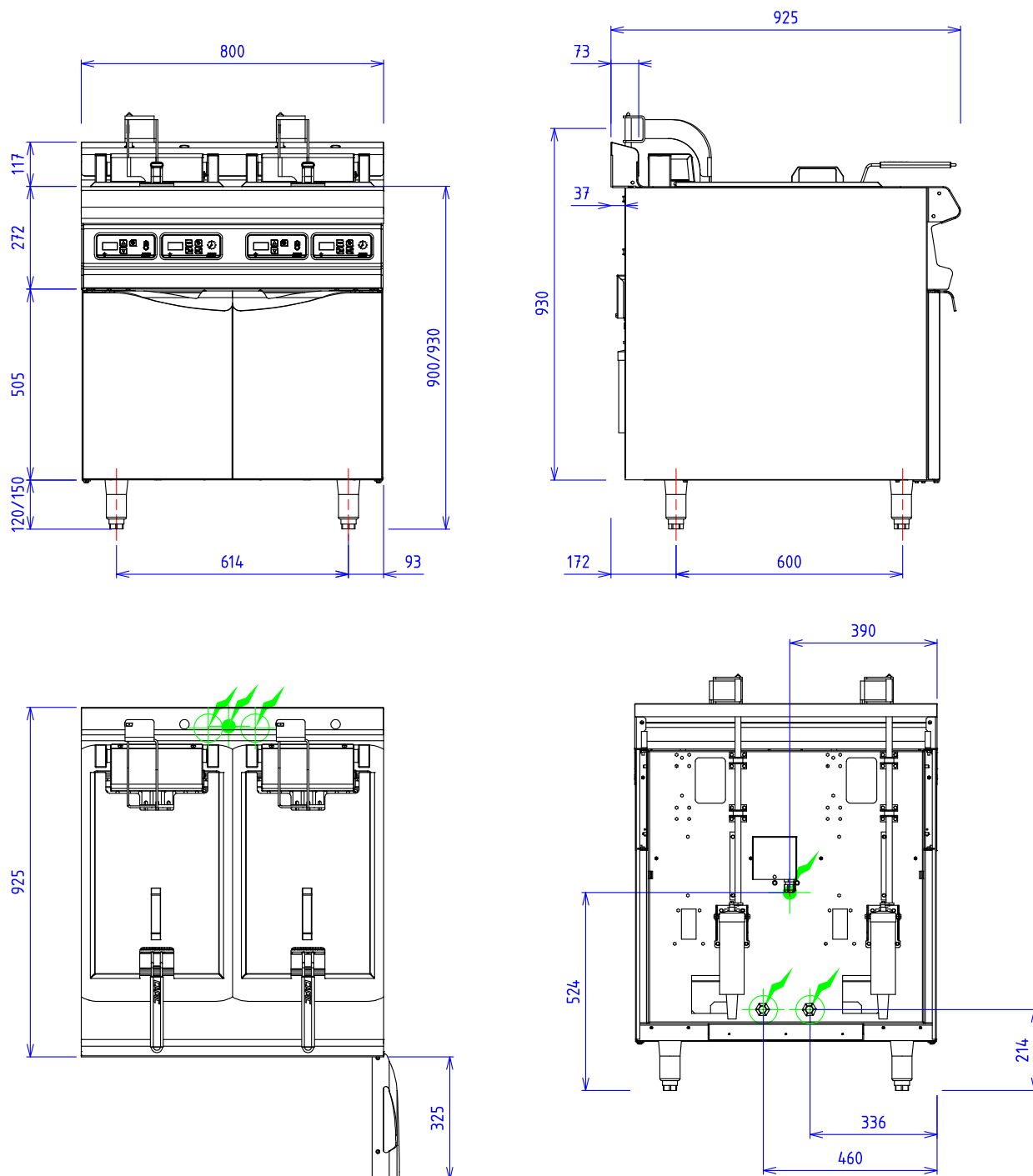
Base unit :

Construction in stainless steel 18.10
 Structure 2 mm
 body 1 mm
 Front without any visible screw
 Double skin doors

Options :

FILTRECAPIC 35 L
 without thawing system (W013016)
 with thawing system (W013017)
 1 big basket of 360x295x135 instead of
 2 small baskets (X082031)
 Infrared lamp (500W)
 for pre-equipped cupboard (W042403)

ARMEN AM20 2 TURBOFRIT ELEC AUTO RAISING CLOSED CUPBOARD



- ELEC :**
- ⚡ Electric power : 20.5 kW Elec reservation : internal wiring Elec fitting : 400Vx3+N+T
 - ⚡ Electric power : 20.5 kW Elec reservation : internal wiring Elec fitting : 400Vx3+N+T
 - 230V Mono +T if infrared ramp option

Electrical devices standard to the norm EN 60-335

The emblems, descriptions and diagrams of this documentation are given for your information and could be modified without notice.