



## Characteristics

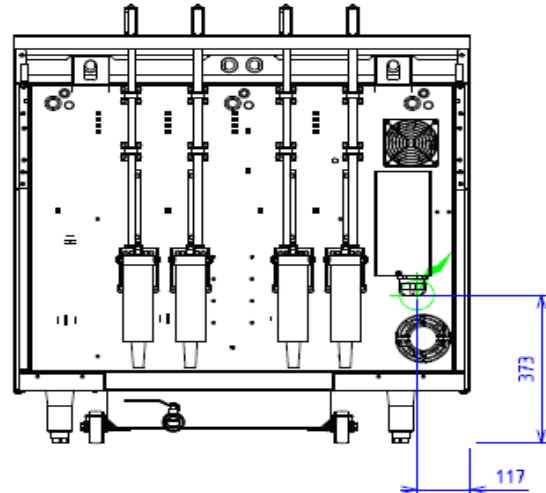
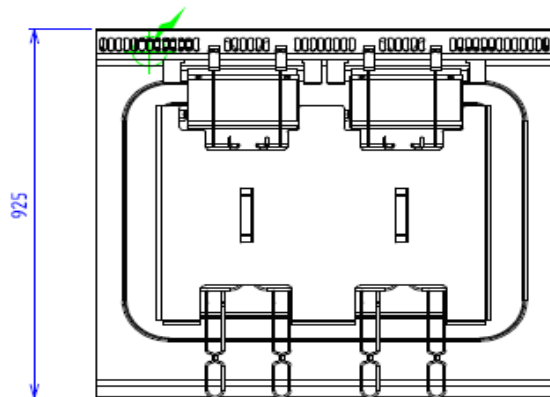
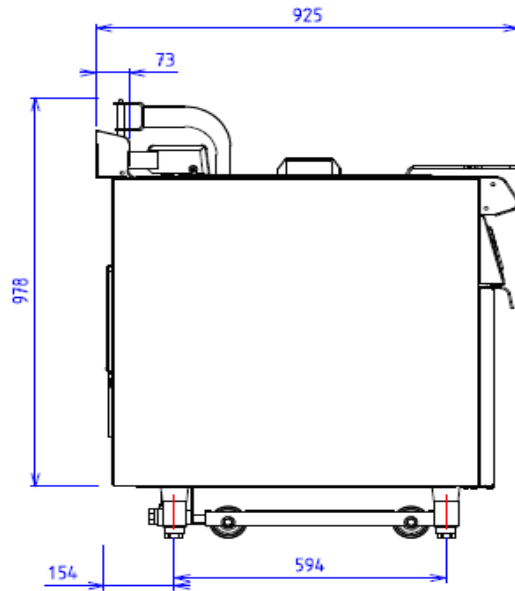
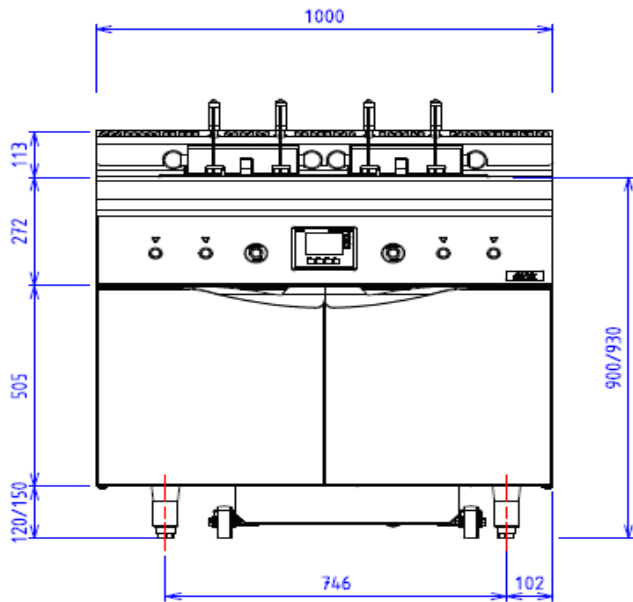
External dimensions : 1000 X 925 X 900  
 Stainless steel top 18.10 planetary planetary brushed finish  
 Top thickness : 3 mm  
 body 1 mm in planetary brushed stainless steel  
 Structure : 2 mm in stainless steel  
 Stand with composite feet of 150 adjustable in height  
 folded front edge radius 20 mm  
 Back edge forming a chimney cover  
 Front without any visible screw

## Top

2 stainless steel tanks 23 liters  
 Electric power 2x28 kW  
 Independent electronic temperature regulation by tank and safety thermostat  
 4 independent baskets automatic lifts with timer and programmable recipes  
 Integrated automatic filtration device with alarm associated with a number of operating cycles  
 Automatic filling system for oil booster with integrated accessory  
 Heating by oblong shielded stainless steel hinged heating elements

## Base unit

Construction in stainless steel 18.10  
 Structure 2 mm  
 body 1 mm  
 Front without any visible screw  
 Double skin doors  
 Removable filter on wheels with level probe allowing the control of the quantity of oil



## ELECTRIC



Electric power : 56.00kW

Elec Réserve : INTERNAL TERMINAL BOARD - Elec fitting  
: 400V THREE + NEUTRAL

Electrical devices standard to the norm EN 60-335