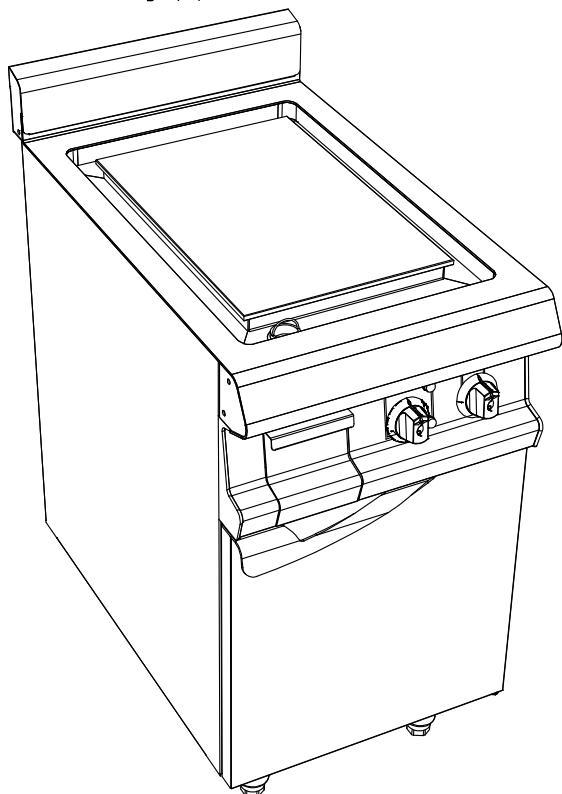


CELTIC 800 **FRONT 500**



Characteristics :

External dimensions : 500x836x900/930
Top in brushed 18.10 stainless steel
Top thickness : 3 mm
body 1 mm in brushed stainless steel
Structure : 2 mm in stainless steel
composite feet de 150 height adjustable
folded front edge radius 20 mm
Back edge forming a chimney cover
Front without any visible screw

Top :

Special stainless steel plate 18.10 thickness 15 mm
Dimensions : 340x515
Power : 3 kW
Heating by reinforced stainless steel resistance
Leaned against the bottom of the plate
1 heating zone controlled by independent thermostat
Scraper included
peripheral water trough for easy cleaning
over-flow and draining stopper
cleaning and wasted water tray

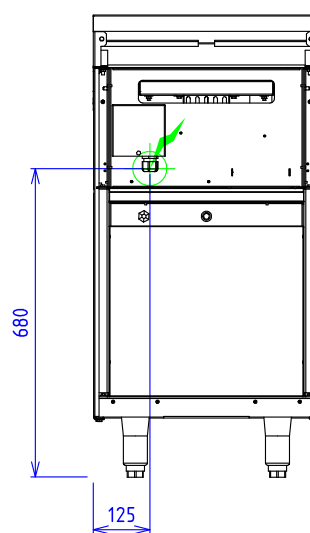
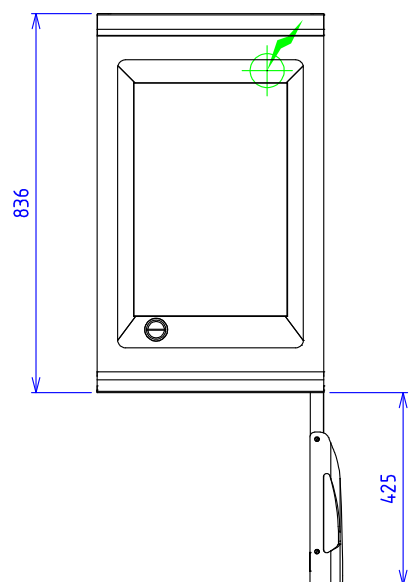
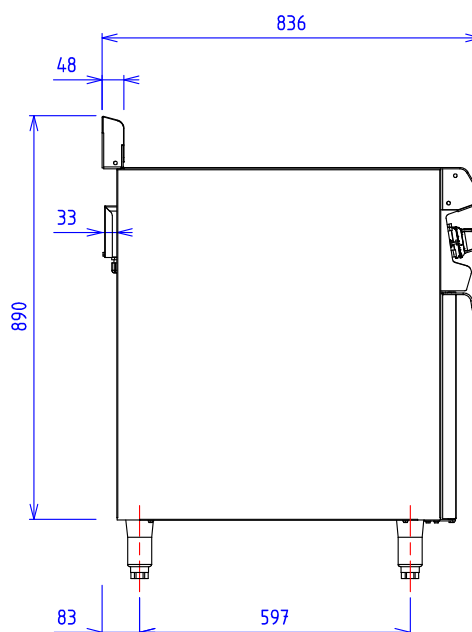
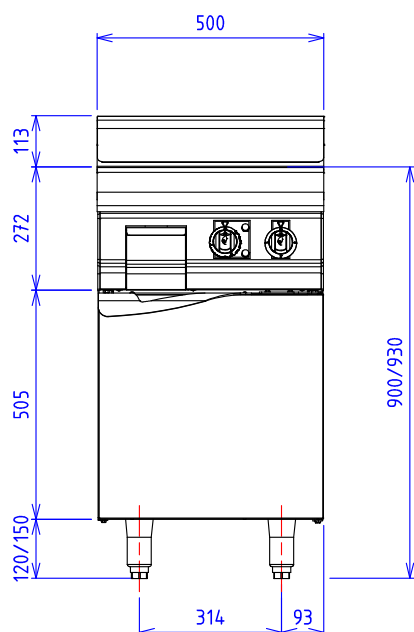
Base unit :

Construction in stainless steel 18.10
Structure 2 mm
body 1 mm
External dimensions : 500x724x650
Interior dimensions : 430x656x310
intermediate shelf
Front without any visible screw
Double skin door
Power 850 W
Regulation by thermostat 0-85°C

Options :

Polishing chrome aspect (X050974)
Ribbed 1/2 (X050975)
Ribbed complet (X050976)
Removable splash guard (X900631)
Water feeding controlled from front, waste filter
External draining to be fit (X051521)
Stainless steel trim bar (X081001)

C15S S/S STEEL PLANCHA ELEC. HOT CUPBOARD



ELEC :  Electric power : 3.85 kW Elec reservation : internal wiring Elec fitting : 400Vx3+N+T

Electrical devices standard to the norm EN 60-335

The emblems, descriptions and diagrams of this documentation are given for your information and could be modified without notice.