

## CELTIC C15 S/S PLANCHA GAS

### 620X515 PLATE CLOSED CUPBOARD



#### Characteristics

External dimensions : 800 X 835 X 900  
 Stainless steel top 18.10 planetary planetary brushed finish  
 Top thickness : 3 mm  
 body 1 mm in planetary brushed stainless steel  
 Structure : 2 mm in stainless steel  
 Stand with composite feet of 150 adjustable in height  
 folded front edge radius 20 mm  
 Back edge forming a chimney cover  
 Front without any visible screw

#### Top

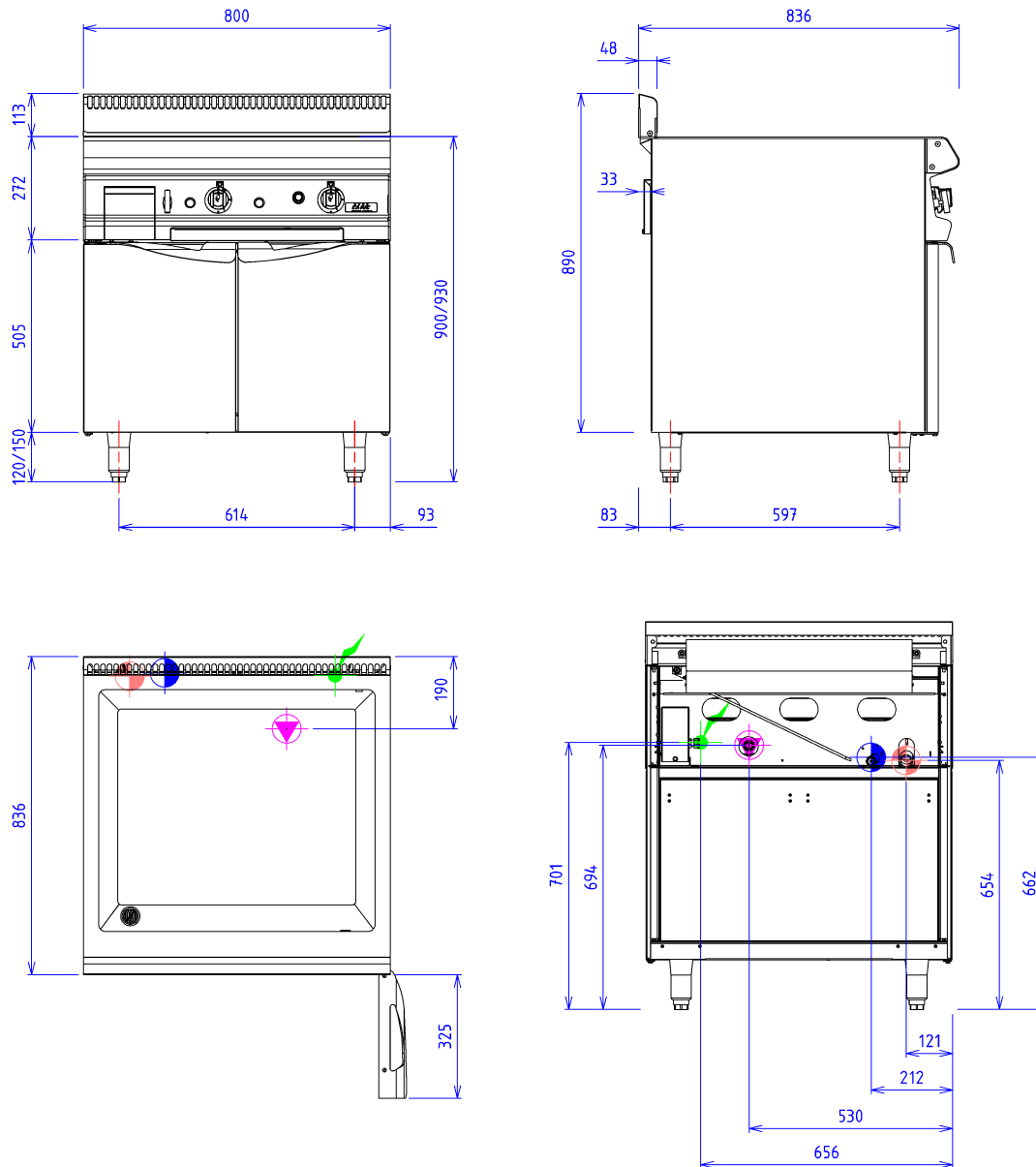
Special stainless steel plate 18.10 thickness 15 mm  
 Dimensions : 515x620  
 Power : 10 kW  
 cleaning drawer  
 Security pilot and thermocouple  
 Heating by 3 strong tubular stainless steel ramps  
 thickness allowing to control  
 2 heating zones  
 Scraper included  
 peripheral water trough for easy cleaning  
 over-flow and draining stopper  
 cleaning and waste water drawer

#### Options :

mirror polishing chrome aspect (X050974)  
 1/3 ribbed for plancha (X051501)  
 1/2 ribbed for plancha (X051502)  
 water feed channel controlled drain connection for plancha (X051521)  
 lateral splash guard for plancha front 800 (X900630)  
 gaz connection kit for hose per device (X901405)  
 electric ignition gas burner (first gas burner) (X901501)

#### Base unit

Construction in stainless steel 18.10  
 Structure 2 mm  
 body 1 mm  
 External dimensions : 800x724x650  
 Interior dimensions : 730x656x430  
 Front without any visible screw  
 Double skin doors



## GAS



Gas power : 10kW

Gas connection : 15/21 MALE TAPERING

Gas appliances complying with standard NF EN 203.EN 437

Gas Directive 2009/142/EC

## ELECTRIC



Electric power : 0.00kW

Elec Réserve : - Elec fitting :

230V SINGLE( Si option électrique sélectionnée)

Electrical devices standard to the norm EN 60-335