



## CELTIC C11 PASTA COOKER ELEC.

### AUTO RAISING / CLOSED CUPBOARD

#### Characteristics

External dimensions : 400 X 835 X 900  
 Stainless steel top 18.10 planetary planetary brushed finish  
 Top thickness : 3 mm  
 body 1 mm in planetary brushed stainless steel  
 Structure : 2 mm in stainless steel  
 Stand with composite feet of 150 adjustable in height  
 folded front edge radius 20 mm  
 Back edge forming a chimney cover  
 Front without any visible screw

#### Top

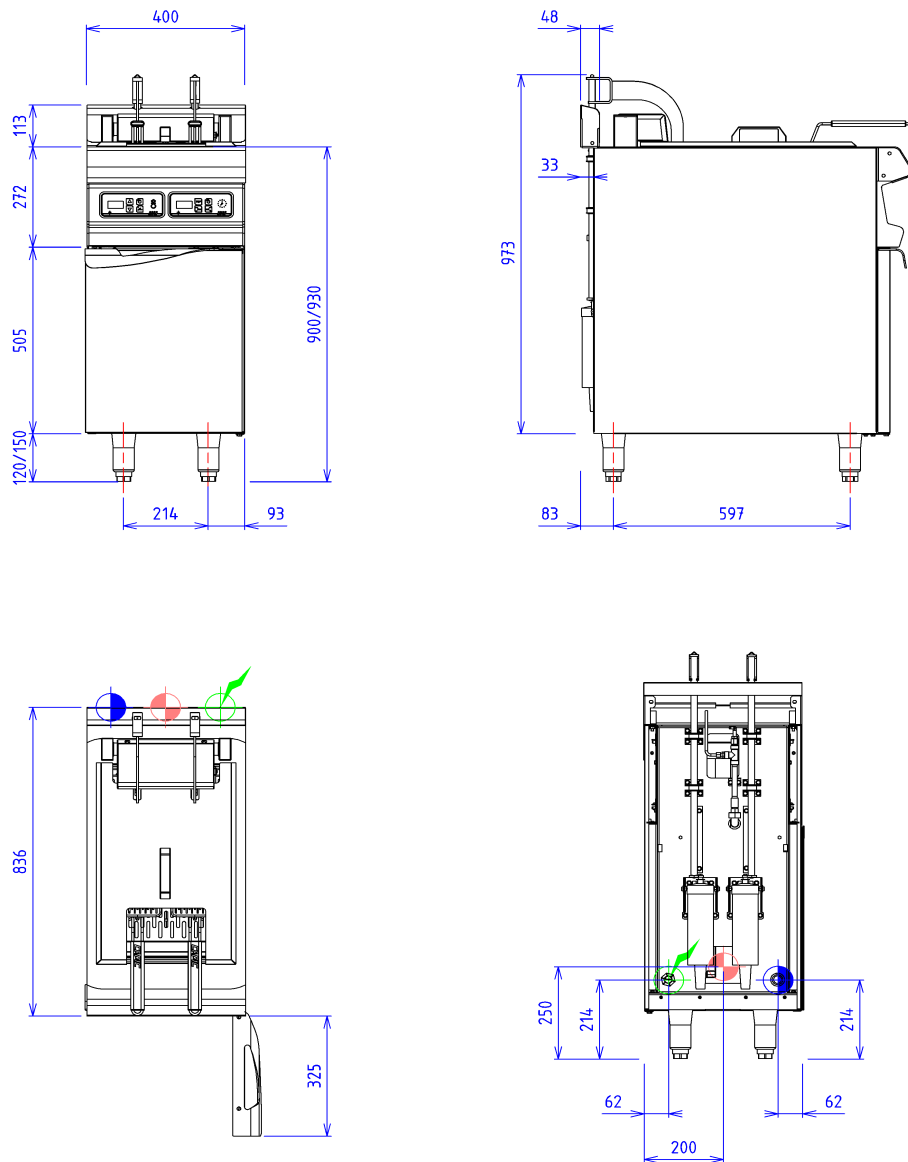
stainless steel tank 316L  
 Power : 10 kW  
 Efficiency: 30-35 kg/h of fresh pastas  
 Heating by oblong resistances  
 reinforced and tilting  
 Draining by 1/4 turn tap diam 20/27  
 Water stream doing  
 into the overflow area  
 overflow area  
 Automatic baskets lifting with timer  
 Automatic water level control  
 2 baskets dimension 310 x 120 x 185

#### Options :

pasta portion basket price per unit - 6 max/ tank (X291101)

#### Base unit

Construction in stainless steel 18.10  
 Structure 2 mm  
 body 1 mm  
 External dimensions : 400x724x650  
 Front without any visible screw  
 Double skin door



## ELECTRIC



Electric power : 11.00kW

Elec Réservation : INTERNAL TERMINAL BOARD - Elec fitting  
: 400V THREE phases + NEUTRAL

Electrical devices standard to the norm EN 60-335

## WATER/AIR



Drain fitting :D 42 male stainless steel