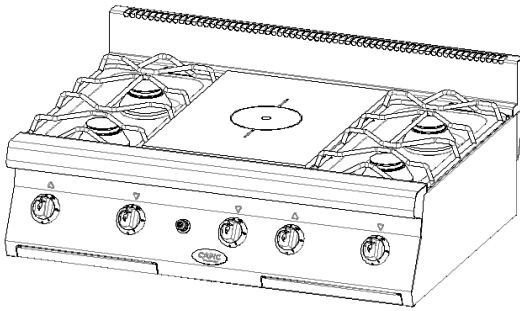


AVEN 700 AV24 4 OPEN BURNERS + FRENCH HOT  
 TOP  
 TOP ONLY

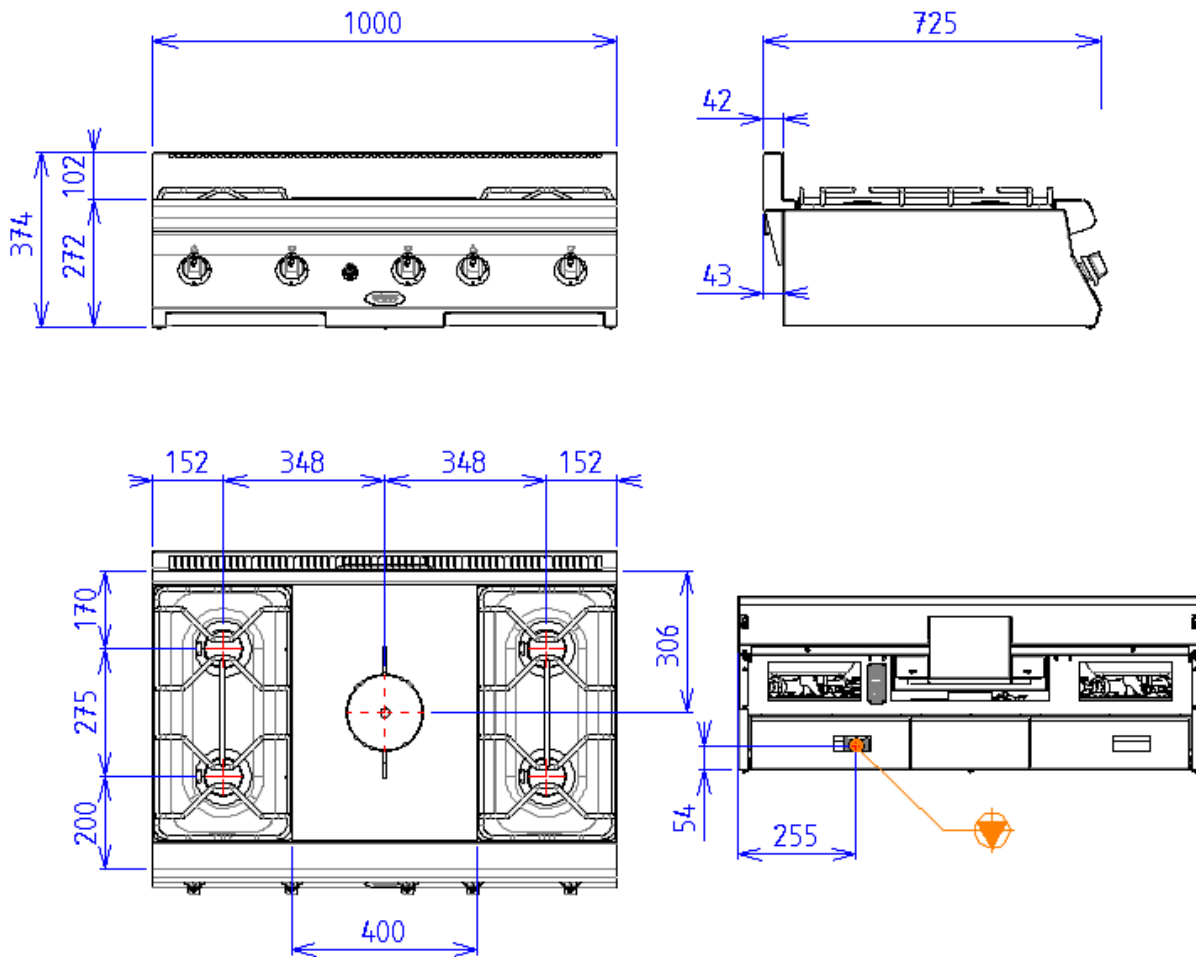
### Characteristics

External dimensions : 1000 X 725 X 270  
 Construction in planetary brushed stainless steel 18.10  
 Top thickness : 2 mm  
 Front : 1 mm planetary brushed finish  
 Structure : 1 mm in stainless steel  
 Back edge forming a chimney cover  
 Front without any visible screw



### Top

2 open burners on right  
 2 open burners on left  
 removable burners with pilot light 4x4,8kw  
 Stainless steel burner grill dimensions : 300x550  
 Stamped tank in stainless steel  
 cleaning tray  
 Solid top made of steel, dimensions : 400x550  
 Power 6.0 kW  
 Fireplace with brick refractory  
 Heating by circular burner  
 regulated flow by a 3-positions tap  
 Security by thermocouple with pilotlight  
 Ignition by spark battery (type AA)



## GAS



Gas power : 25.20kW

Gas connection : 15/21 MALE TAPERING

Gas appliances complying with standard NF EN 203.EN 437

Gas Directive 2009/142/EC