

Characteristics

External dimensions : 400 X 725 X 270

Construction in planetary brushed stainless steel 18.10

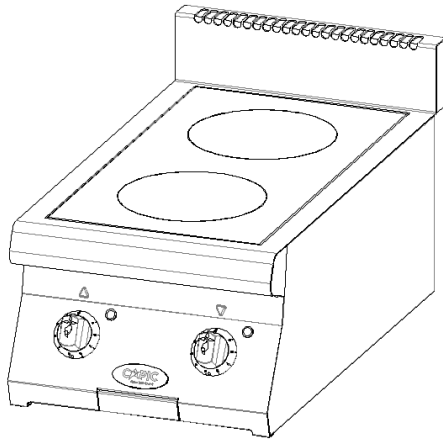
Top thickness : 2 mm

Front : 1 mm planetary brushed finish

Structure : 1 mm in stainless steel

Back edge forming a chimney cover

Front without any visible screw



Top

Glass ceramic plate 4 mm thick. Dim: 650x325

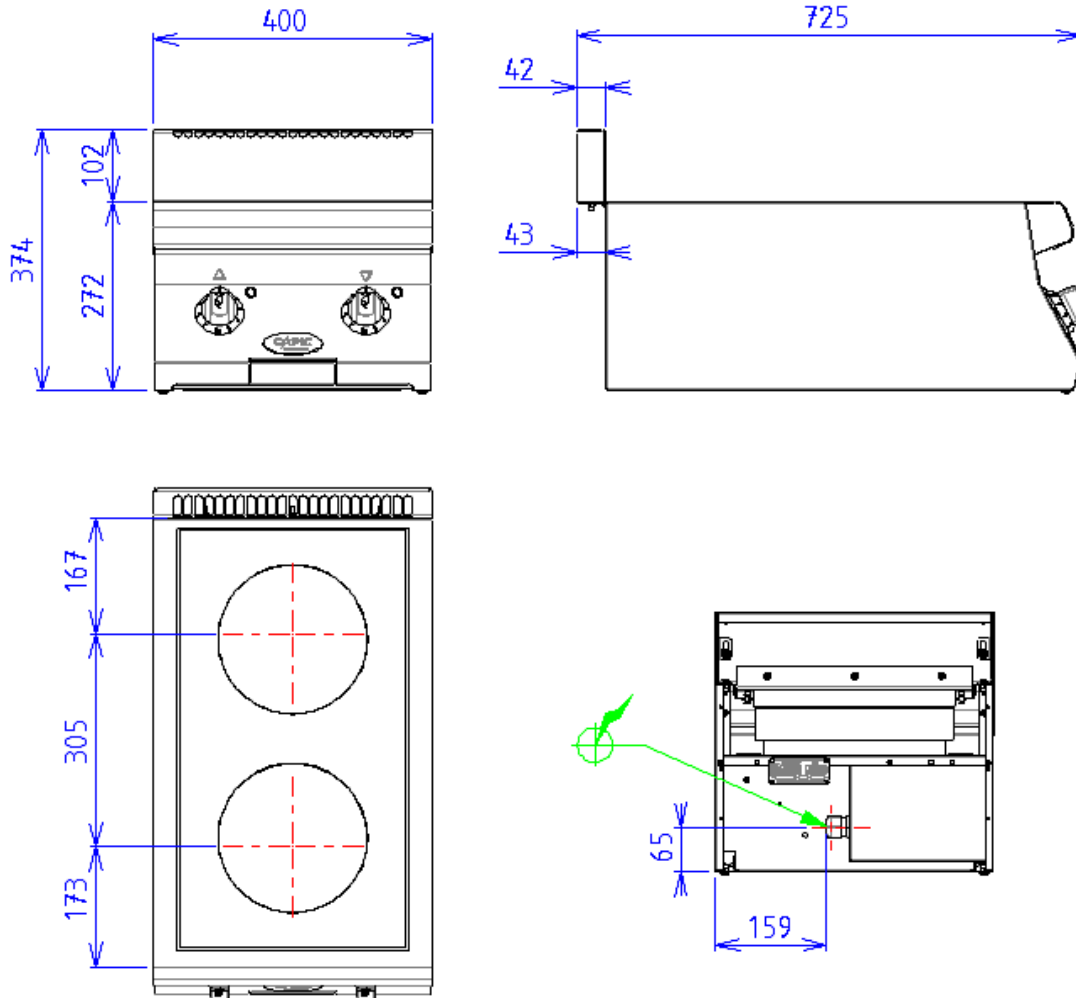
2 separate induction hobs - unit power : 3 kW

Diameter of inductor: 210mm

Regulation obtained by a calibrated potentiometer

Pan detection

Heat indicator



ELECTRIC



Electric power : 6.00kW

Elec Réserve : INTERNAL TERMINAL BOARD - Elec fitting
: 230V SINGLE

Electrical devices standard to the norm EN 60-335