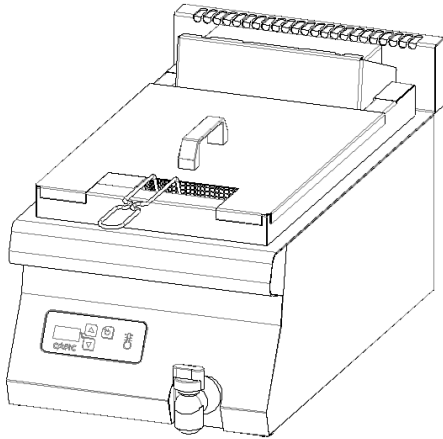


### Characteristics

External dimensions : 400 X 725 X 270  
 Construction in planetary brushed stainless steel 18.10  
 Top thickness : 2 mm  
 Front : 1 mm planetary brushed finish  
 Structure : 1 mm in stainless steel  
 Back edge forming a chimney cover  
 Front without any visible screw

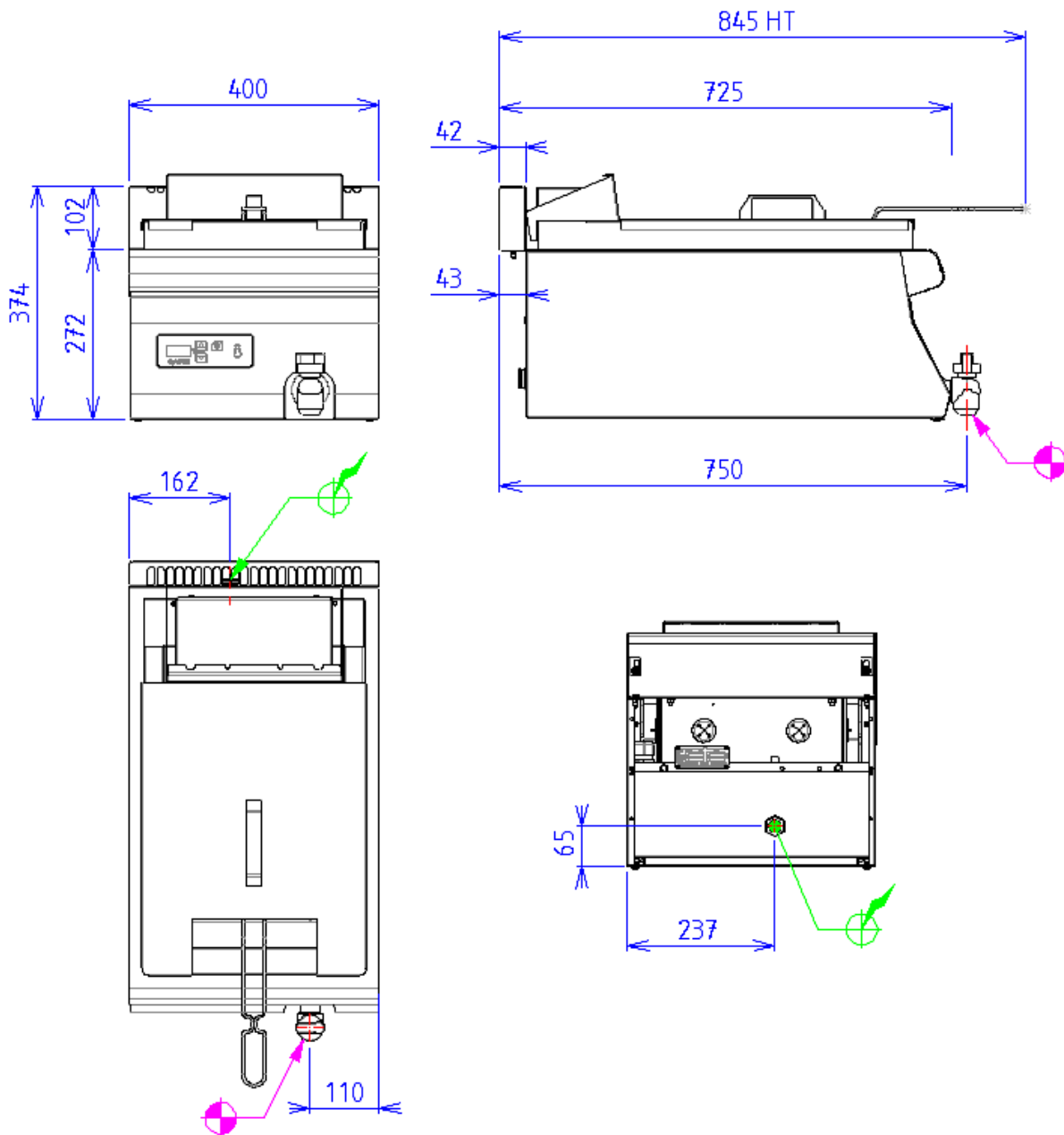


### Top

15L stainless steel Reservoir / 1.5mm thickness  
 Power : 10 kW  
 Digital control with oil melting system  
 Efficiency: 25 kg/h 6x6 frozen french fries  
 Thermostat 180°C positive security 220°C  
 Heating by oblong resistances  
 1 stainless steel basket dimension : 360x285x135  
 Drain valve 1/4 turn dia.20 / 27 in front

### Options :

1/2 basket 360x140x135 pack of 2 (X082033)  
 large basket (360x285x135) (X291005)  
 oil recovery box with sieves(not integrated in base unit) (X543001)



## ELECTRIC



Electric power : 10.00kW

Elec Réserve : INTERNAL TERMINAL BOARD - Elec fitting  
: 400V THREE phases + NEUTRAL

Electrical devices standard to the norm EN 60-335