

### Characteristics

External dimensions : 400 X 725 X 250

Construction in planetary brushed stainless steel 18.10

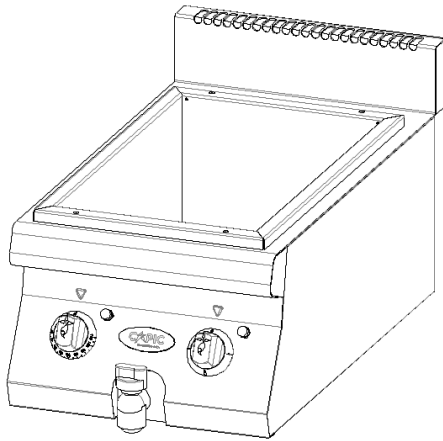
Top thickness : 2 mm

Front : 1 mm planetary brushed finish

Structure : 1 mm in stainless steel

Back edge forming a chimney cover

Front without any visible screw



### Top

on/off switch

Indicator light

Tank dimensions: 306x510x220

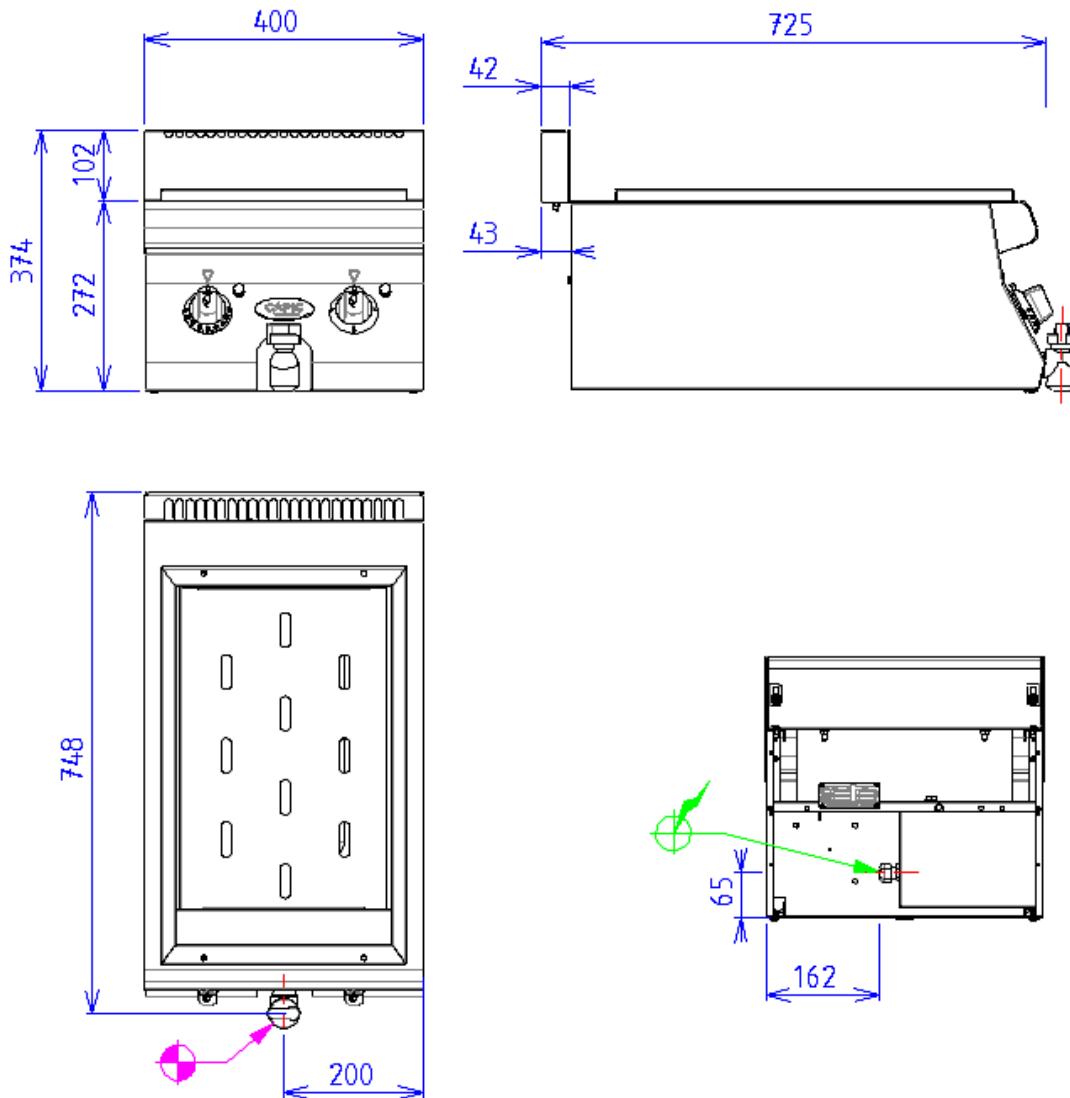
For GN 1/1 tray (not provided)

Heating by reinforced stainless steel resistances

Regulation by thermostat 30-110°C

Power : 2,4 kW

Drain valve 1/4 turn dia.20 / 27 in front



## ELECTRIC



Electric power : 2.40kW

Elec Réserve : INTERNAL TERMINAL BOARD - Elec fitting : 230V SINGLE

Electrical devices standard to the norm EN 60-335