

AVEN AV19 2 OPEN BURNERS LEFT + FRENCH HOT TOP

2 BURNERS 4.8 KW + HOT PLATE 6 KW

Characteristics

External dimensions : 800 X 725 X 270

Construction in planetary brushed stainless steel 18.10

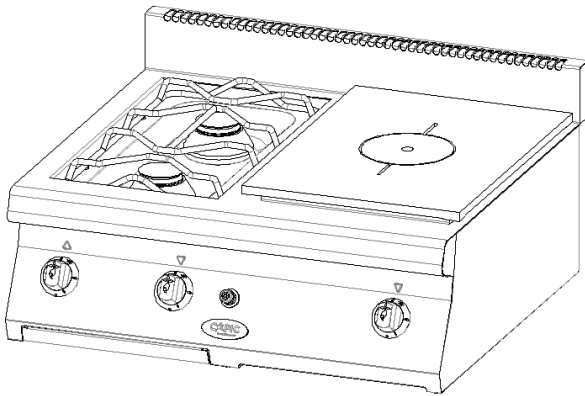
Top thickness : 2 mm

Front : 1 mm planetary brushed finish

Structure : 1 mm in stainless steel

Back edge forming a chimney cover

Front without any visible screw



Top

2 open burners on left

removable burners with pilot light 2x4,8kw

Stainless steel burner grill dimensions : 300x550

Stamped tank in stainless steel

cleaning tray

Solid top made of steel, dimensions : 400x550

Power 6.0 kW

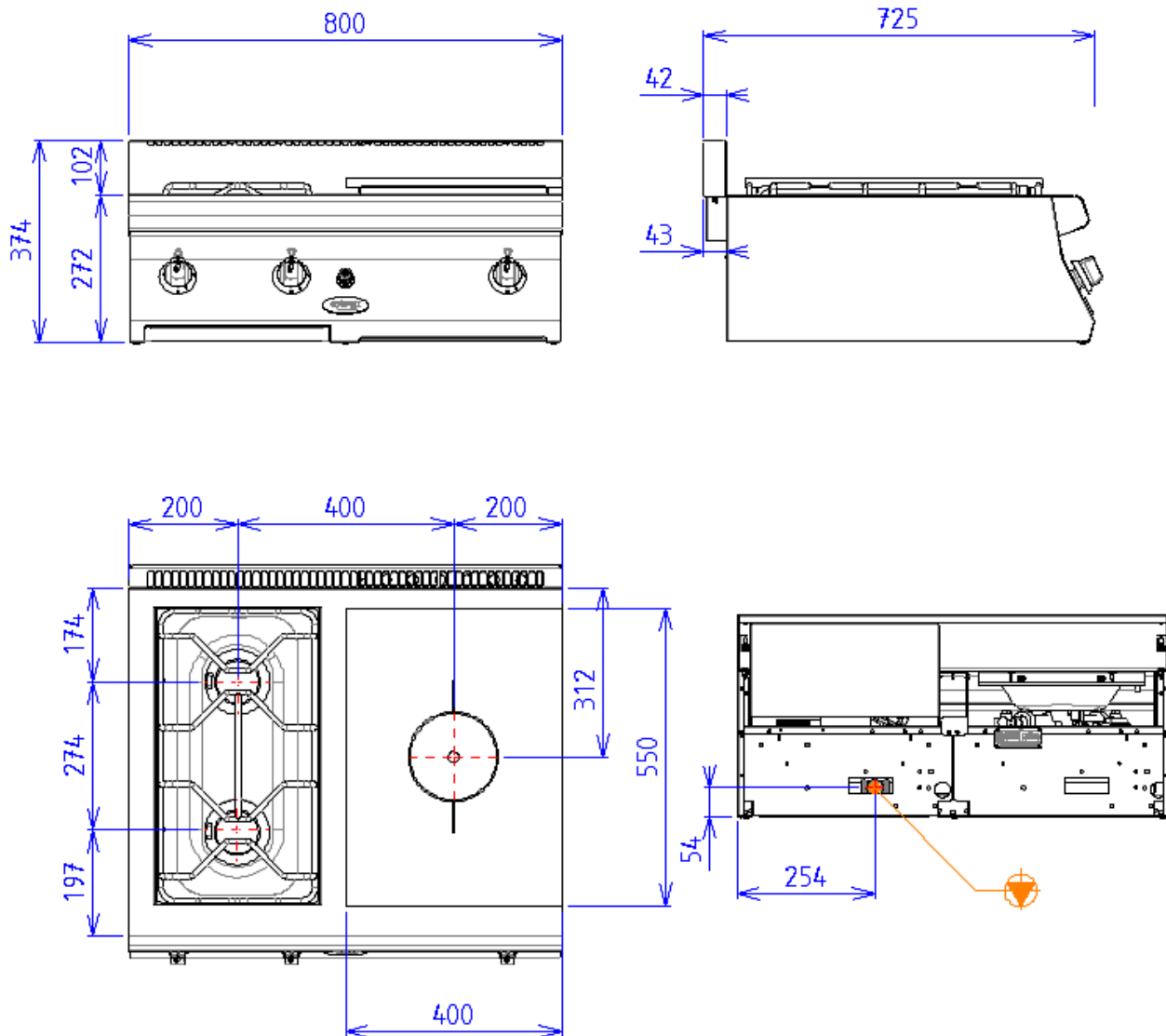
Fireplace with brick refractory

Heating by circular burner

regulated flow by a 3-positions tap

Security pilot and thermocouple

Ignition by spark battery (type AA)

**GAS**

Gas power : 15.60kW

Gas connection : 15/21 MALE TAPERING

Gas appliances complying with standard NF EN 203.EN 437

Gas Directive 2009/142/EC