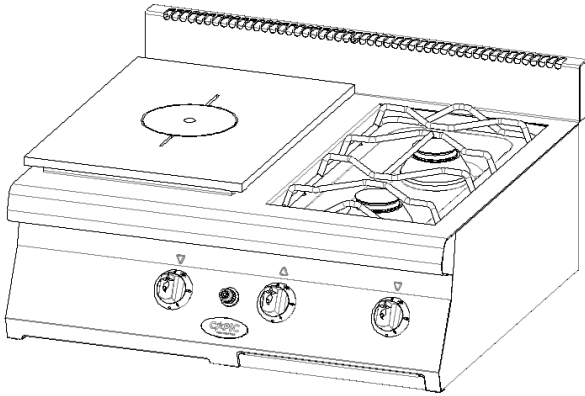


**AVEN AV19 2 OPEN BURNERS RIGHT + FRENCH  
 HOT TOP  
 2 BURNERS 4.8 KW + HOT PLATE 6 KW**

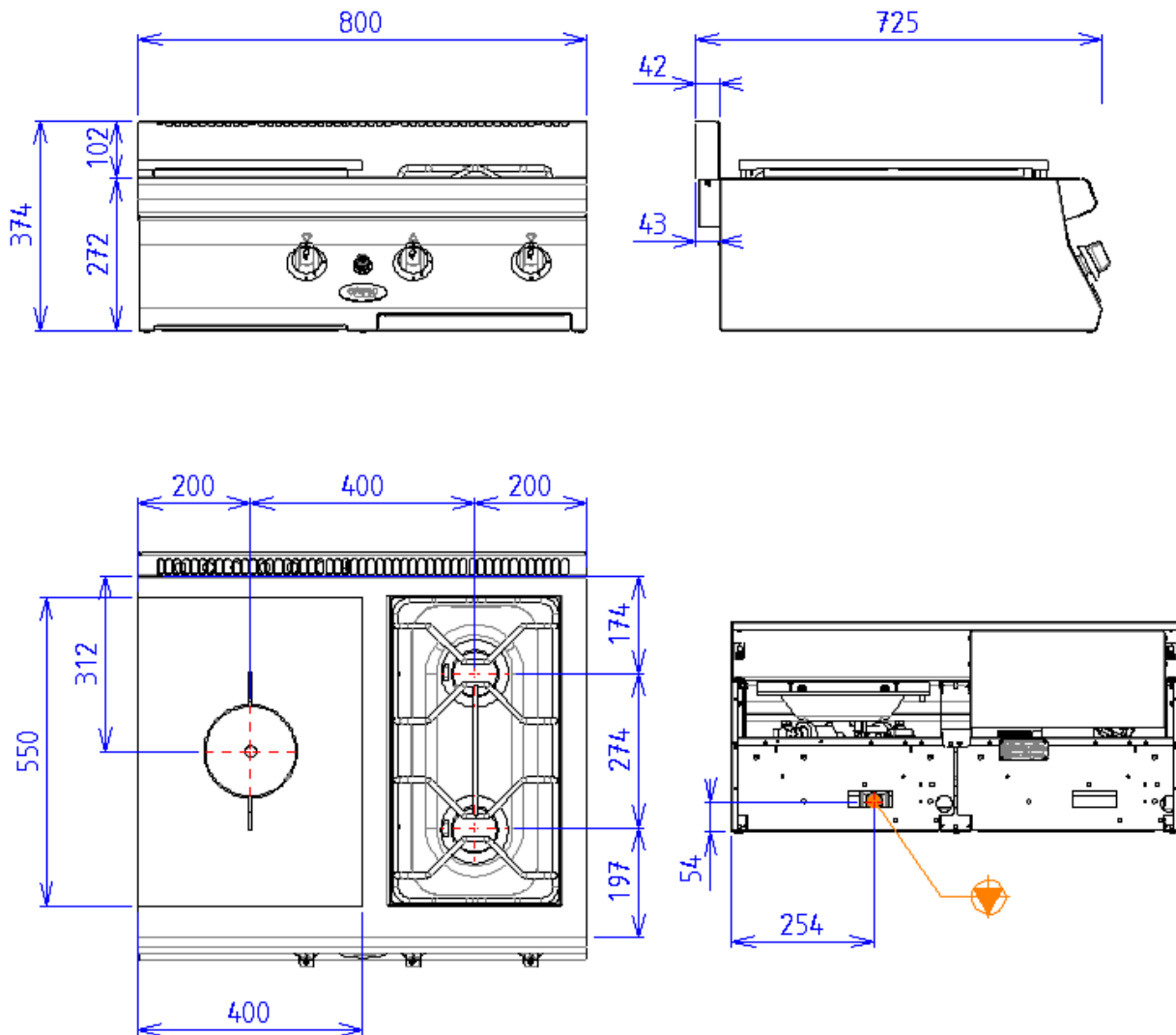
**Characteristics**

External dimensions : 800 X 725 X 270  
 Construction in planetary brushed stainless steel 18.10  
 Top thickness : 2 mm  
 Front : 1 mm planetary brushed finish  
 Structure : 1 mm in stainless steel  
 Back edge forming a chimney cover  
 Front without any visible screw



**Top**

2 open burners on right  
 removable burners with pilot light 2x4,8kw  
 Stainless steel burner grill dimensions : 300x550  
 Stamped tank in stainless steel  
 cleaning tray  
 Solid top made of steel, dimensions : 400x550  
 Power 6.0 kW  
 Fireplace with brick refractory  
 Heating by circular burner  
 regulated flow by a 3-positions tap  
 Security pilot and thermocouple  
 Ignition by spark battery (type AA)



## GAS



Gas power : 15.60kW

Gas connection : 15/21 MALE TAPERING

Gas appliances complying with standard NF EN 203.EN 437

Gas Directive 2009/142/EC