



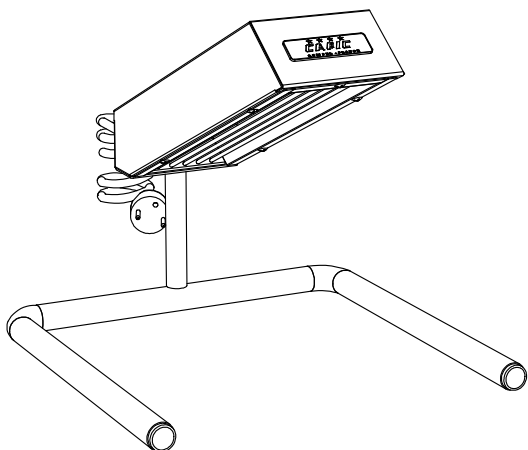
The reference in catering equipment


## AVEN 700 FRONT 400

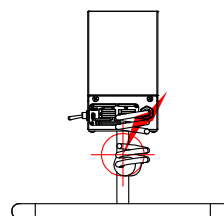
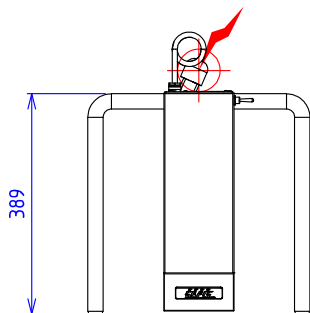
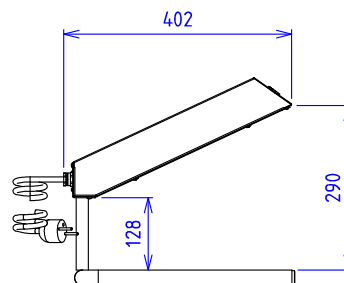
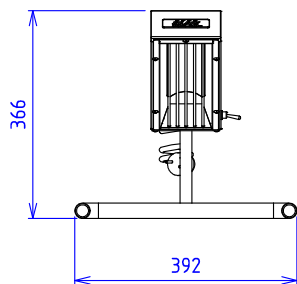
AVEN AV17 RAMPE INFRAROUGE ELEC.  
HEATING LENGTH 240mm

### Characteristics :

External dimensions : 400x430x370  
Construction in brushed 18.10 stainless steel  
On/off switch  
Structure tubulaire  
1mm thick body in F17 stainless steel  
Heating by infra-red resistances  
heating length 240mm  
Power 1000 W



**ELEC :**  Electric power : 1 kW Elec fitting : 230V Mono+T



Electrical devices standard to the norm EN 60-335

The emblems, descriptions and diagrams of this documentation are given for your information and could be modified without notice.



69, av. des sports- 29556 QUIMPER CEDEX9-FRANCE  
tel.: 02.98.64.77.00 - fax: 02.98.52.06.47 e-mail : capic@capic-fr.com