



Characteristics

External dimensions : 400 X 725 X 250

Construction in planetary brushed stainless steel 18.10

Top thickness : 2 mm

Front : 1 mm planetary brushed finish

Structure : 1 mm in stainless steel

Back edge forming a chimney cover

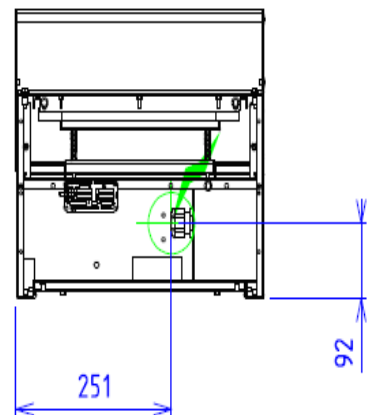
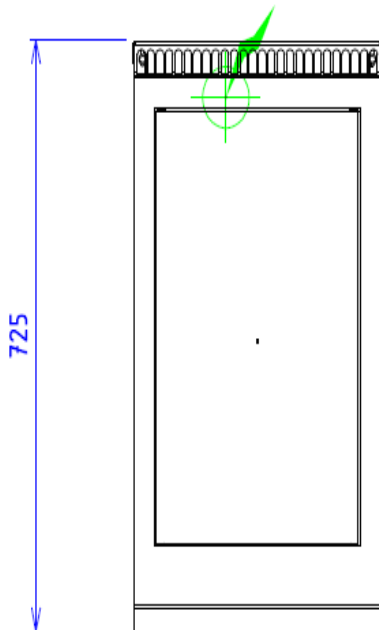
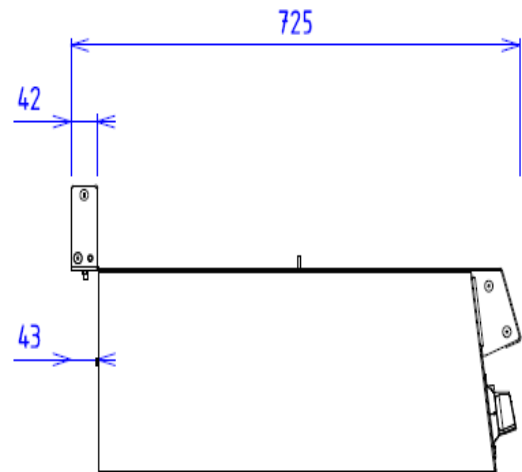
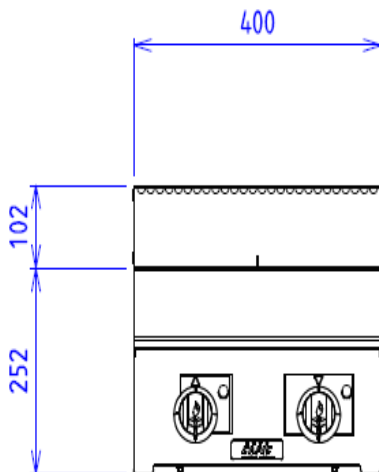
Front without any visible screw


Top

Regulation by thermostat

Radiant hob under vitroceram plate 530x325

Power : 2x3.8 kW



ELECTRIC  Electric power : 7.60kW

Elec Réserve : INTERNAL TERMINAL BOARD - Elec fitting
: 400V THREE phases

Electrical devices standard to the norm EN 60-335