



### Characteristics

External dimensions : 400 X 725 X 250

Construction in planetary brushed stainless steel 18.10

Top thickness : 2 mm

Front : 1 mm planetary brushed finish

Structure : 1 mm in stainless steel

Back edge forming a chimney cover

Front without any visible screw

### Top

2 open burners

removable burners with pilot light 2x4,8kw

Stainless steel burner grill dimensions : 300x550

Stamped tank in stainless steel

regulated flow by a 3-positions tap

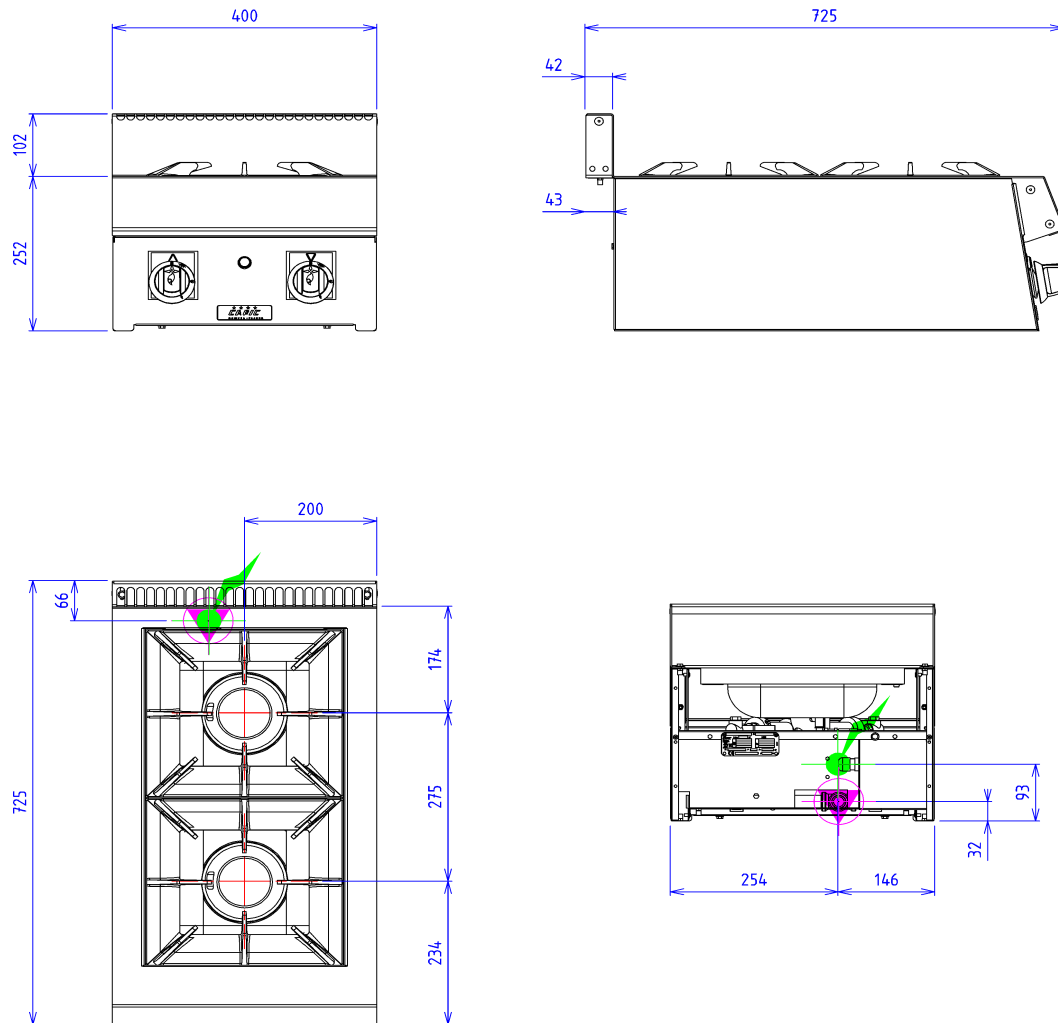
Security pilot and thermocouple

### Options :

plaque grillade fonte 330x310 (X900602)

plaque grillade fonte 550x300 (X900605)

electric ignition gas burnereach other gas burner (X901502)



## GAS



Gas power : 10kW

Gas connection : 15/21 MALE TAPERING

Gas appliances complying with standard NF EN 203.EN 437

Gas Directive 2009/142/EC

## ELECTRIC



Electric power : 0.00kW

Elec Réserve : - Elec fitting :

230V SINGLE( Si option électrique sélectionnée)

Electrical devices standard to the norm EN 60-335