



Characteristics

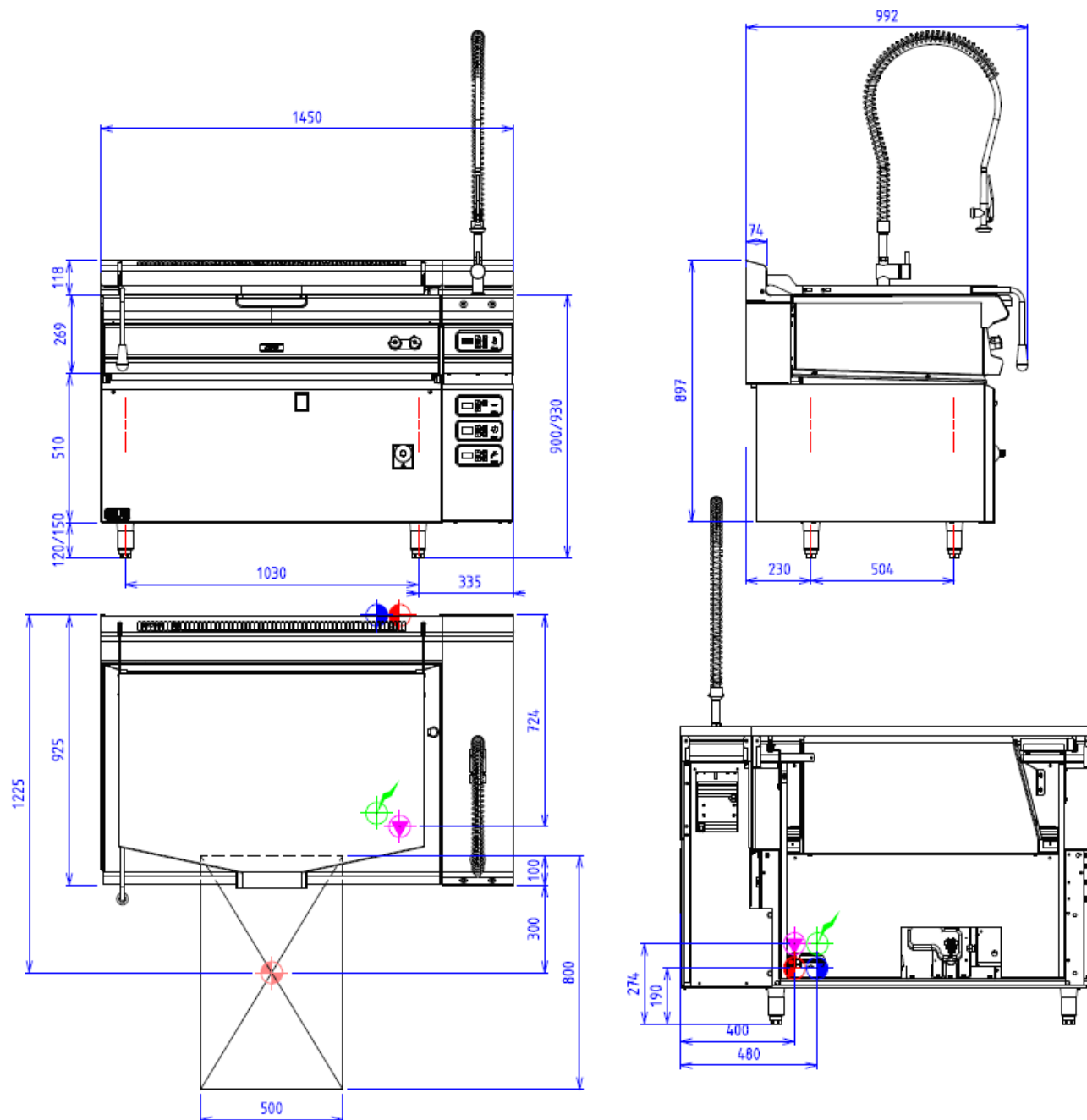
External dimensions : 1450 X 925 X 900
 Stainless steel top 18.10 planetary planetary brushed finish
 Top thickness : 3 mm
 body 1 mm in planetary brushed stainless steel
 Structure : 2 mm in stainless steel
 Stand with composite feet of 150 adjustable in height
 folded front edge radius 20 mm
 Back edge forming a chimney cover

Top

1 mm stainless steel double lid
 equipment with echtermann hinge
 Tank in stainless steel 18.10 thickness 2 mm
 Bimetal bottom - 12 mm thickness
 Wide radius angles
 Wide spout
 Dimensions : 1050x575x250
 Net capacity : 130 l.
 Power : 24,5 kW
 Heating by gas ramps
 Thermostatic regulator with digital control panel
 and multi sensors
 Security pilot and thermocouple
 Hot/Cold water supply
 controlled from front by 1/4 turn tap
 with ceramic components
 Tilting by electric actuator
 Heating stop while tilting
 Multisensor digital thermostatic regulation
 Digital volumetric water meter
 Digital timer end of cooking
 Built-in shower for water supply WW / CW
 Electric ignition

Options :

removable frame bratt pan 60 (X295002)
 spout strainer for 60for model 60 (X295005)
 removable offset spout up to 350mm (X295014)
 offset drain system for more then 350 mm (X295015)
 core probe with regulation and haccp connection (X295019)



GAS



Gas power : 25kW

Gas connection : 20/27 MALE TAPERING

Gas appliances complying with standard NF EN 203.EN 437

Gas Directive 2009/142/EC

ELECTRIC



Electric power : 0.50kW

Elec Réservation : INTERNAL TERMINAL BOARD - Elec fitting : 230V SINGLE

Electrical devices standard to the norm EN 60-335

WATER/AIR



Hot water fitting :15/21 FLEXIBLE



Cold water fitting :15/21 FLEXIBLE