

Characteristics

External dimensions : 500 X 925 X 900
 Stainless steel top 18.10 planetary planetary brushed finish
 Top thickness : 3 mm
 body 1 mm in planetary brushed stainless steel
 Structure : 2 mm in stainless steel
 Stand with composite feet of 150 adjustable in height
 folded front edge radius 20 mm
 Back edge forming a chimney cover
 Front without any visible screw

Top

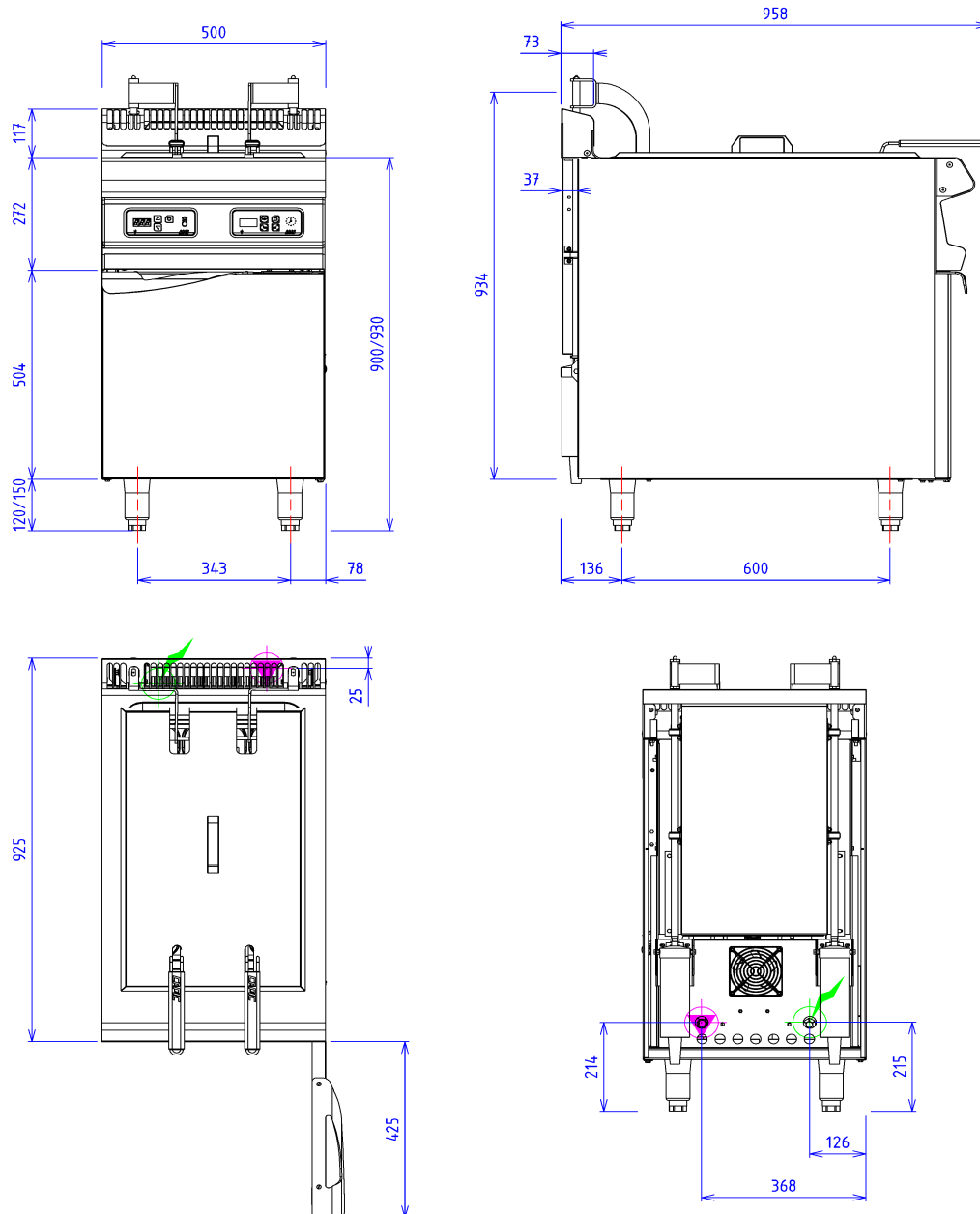
Net 30L stainless steel tank thickness 1.5mm
 Power : 64 kW
 Efficiency: 55 kg/h 6x6 frozen french fries
 Thermostat 180°C positive security 220°C
 Digital control with oil melting system
 Heating by 7 submerged nozzles and torch burners
 Electric ignition
 Security by thermocouple with pilotlight
 Tank with cold zone + 26/34 with draining tap
 2 stainless steel baskets dimension : 455x140x130
 Automatic baskets lifting with timer

Options :

1/2 basket 455 x 140 x 135 pack of 2 (X082034)
 gaz connection kit for hose per device (X901405)

Base unit

Construction in stainless steel 18.10
 Structure 2 mm
 body 1 mm
 External dimensions : 500x724x650
 Front without any visible screw
 Double skin door



GAS



Gas power : 30kW

Gas connection : 15/21 MALE TAPERING

Gas appliances complying with standard NF EN 203.EN 437

Gas Directive 2009/142/EC

ELECTRIC



Electric power : 0.50kW

Elec Réservation : INTERNAL TERMINAL BOARD - Elec fitting : 230V SINGLE

Electrical devices standard to the norm EN 60-335