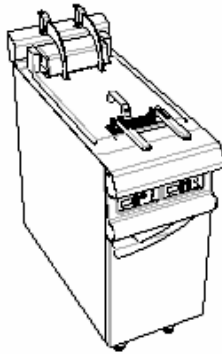


CLOSED CUPBOARD - AUTO RAISING**Characteristics**

External dimensions : 400 X 925 X 900
 Stainless steel top 18.10 planetary planetary brushed finish
 Top thickness : 3 mm
 body 1 mm in planetary brushed stainless steel
 Structure : 2 mm in stainless steel
 Stand with composite feet of 150 adjustable in height
 folded front edge radius 20 mm
 Back edge forming a chimney cover
 Front without any visible screw

**Top**

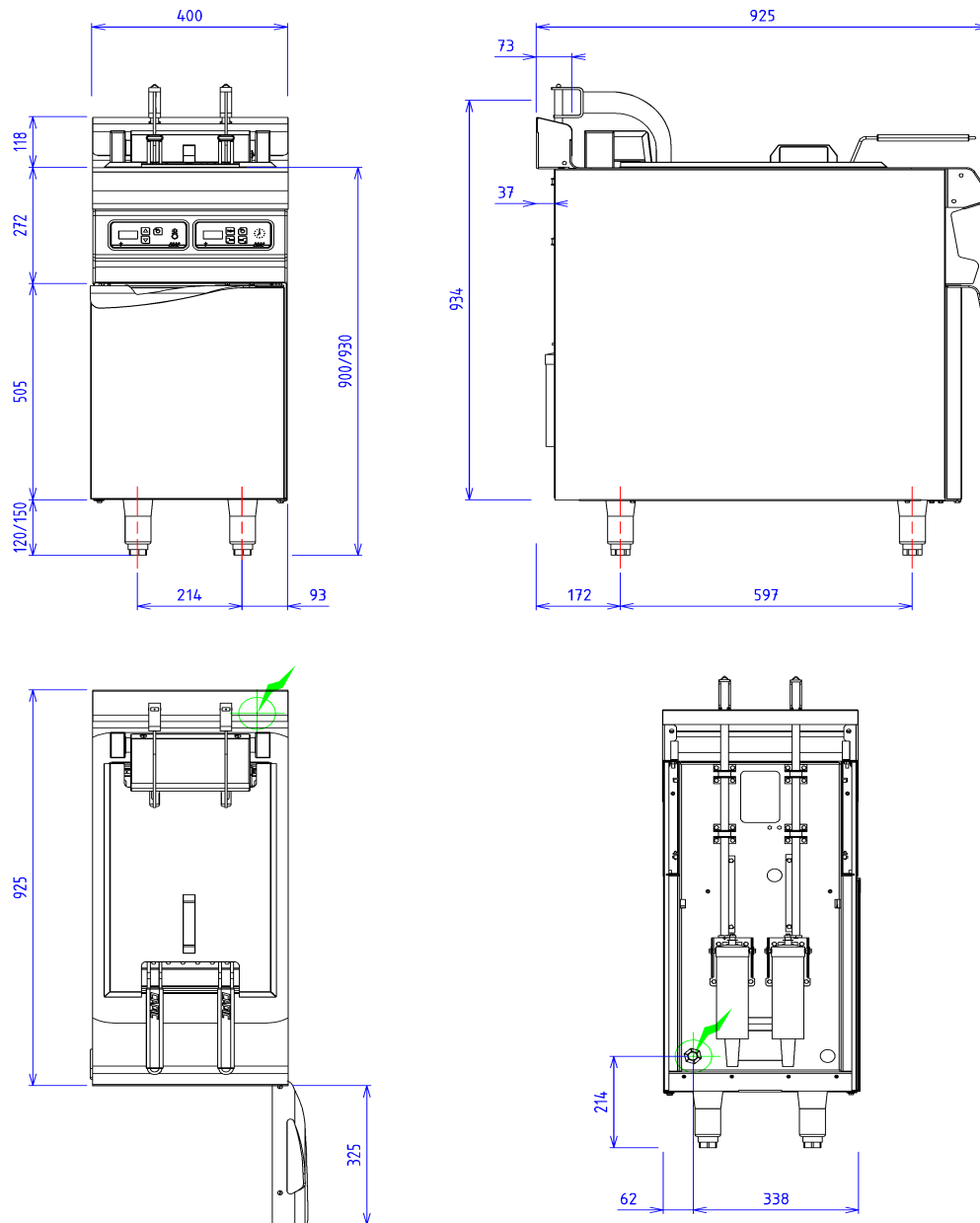
Net 20L stainless steel tank thickness 1.5mm
 Power : 20 kW
 Efficiency: 55 kg/h 6x6 frozen french fries
 Thermostat 180°C positive security 220°C
 Digital control with oil melting system
 Heating by oblong resistances
 reinforced and tilting
 Draining by 1/4 turn tap diam 20/27
 2 stainless steel baskets dimension : 360x140x135
 Digital controls
 Automatic baskets lifting with timer

Options :

1/2 basket 360x140x135 pack of 2 (X082033)

Base unit

Construction in stainless steel 18.10
 Structure 2 mm
 body 1 mm
 External dimensions : 400x724x650
 Front without any visible screw
 Double skin door
 Recycling tray in closet



ELECTRIC



Electric power : 20.50kW

Elec Réservation : INTERNAL TERMINAL BOARD - Elec fitting
: 400V THREE phases + NEUTRAL

Electrical devices standard to the norm EN 60-335