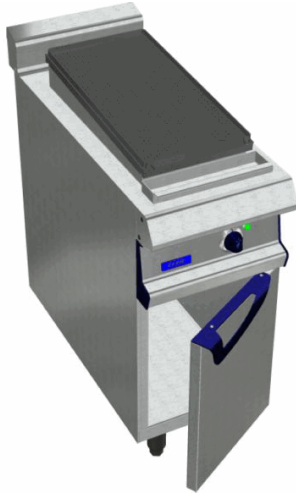


ARMEN AM9F ELEC RIBBED CAST IRON

HOT PLATE 300X600 - HOT CUPBOARD



Characteristics

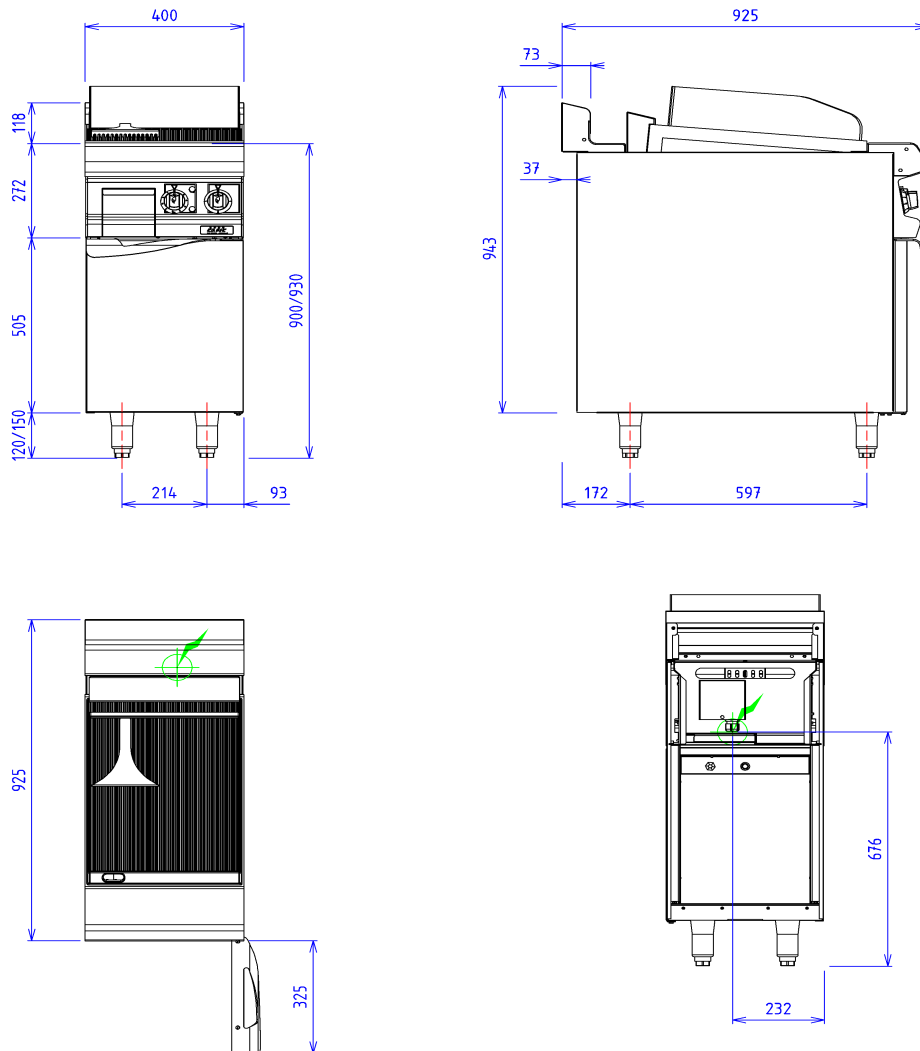
External dimensions : 400 X 925 X 900
 Stainless steel top 18.10 planetary planetary brushed finish
 Top thickness : 3 mm
 body 1 mm in planetary brushed stainless steel
 Structure : 2 mm in stainless steel
 Stand with composite feet of 150 adjustable in height
 folded front edge radius 20 mm
 Back edge forming a chimney cover
 Front without any visible screw

Top

ribbed and sloping cast iron plate : 400x550
 Power : 5 kW
 Heating by reinforced stainless steel resistance
 Control by thermostat
 removable Splash guard
 Drawer to collect greases

Base unit

Construction in stainless steel 18.10
 Structure 2 mm
 body 1 mm
 External dimensions : 400x724x650
 Interior dimensions : 330x656x310
 intermediate shelf
 Front without any visible screw
 Double skin door
 Power 850 W
 Regulation by thermostat 0-85°C



ELECTRIC



Electric power : 5.85kW

Elec Réservation : INTERNAL TERMINAL BOARD - Elec fitting
: 400V THREE phases + NEUTRAL

Electrical devices standard to the norm EN 60-335