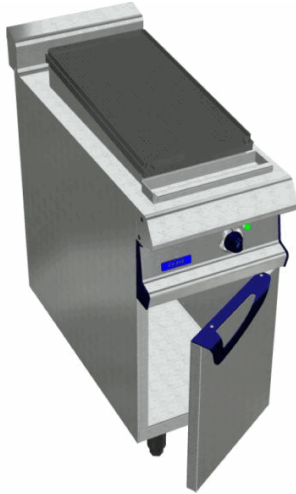


ARMEN AM9F ELEC RIBBED CAST IRON

HOT PLATE 300X600 CLOSED CUPBOARD



Characteristics

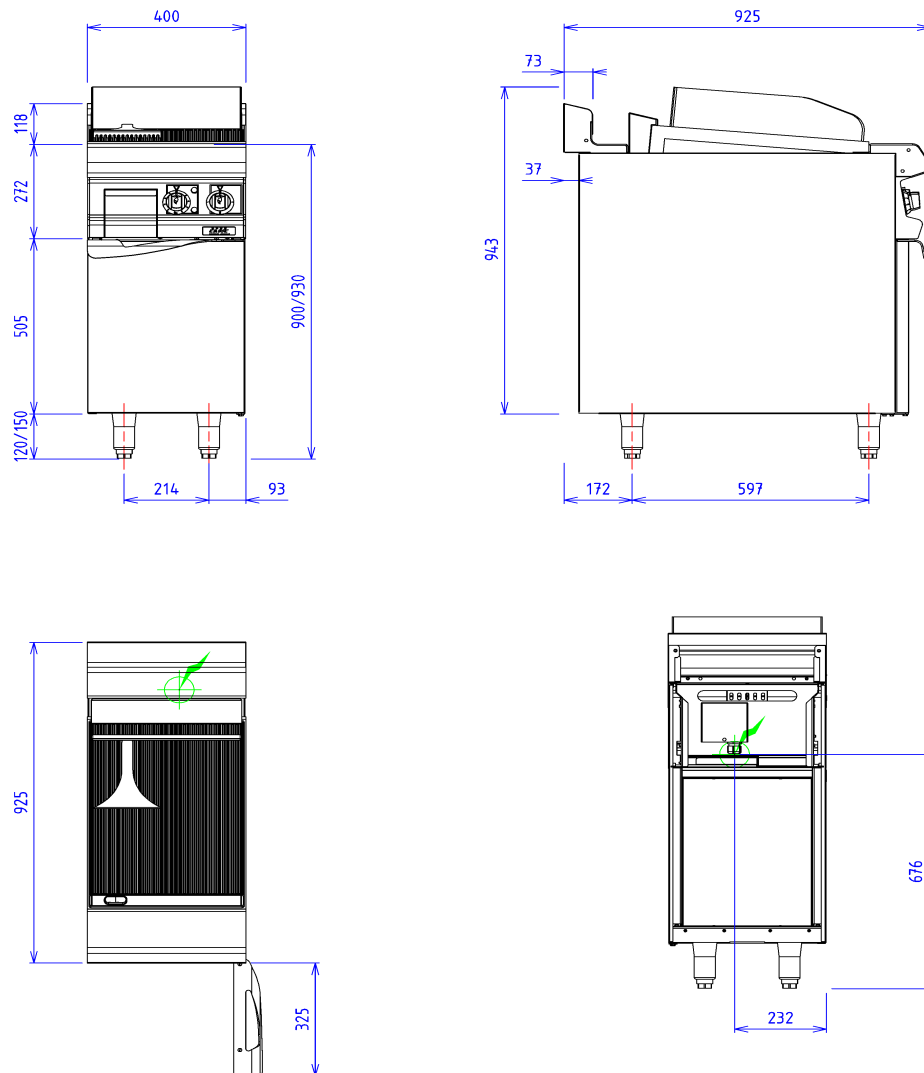
External dimensions : 400 X 925 X 900
Stainless steel top 18.10 planetary planetary brushed finish
Top thickness : 3 mm
body 1 mm in planetary brushed stainless steel
Structure : 2 mm in stainless steel
Stand with composite feet of 150 adjustable in height
folded front edge radius 20 mm
Back edge forming a chimney cover
Front without any visible screw

Top

ribbed and sloping cast iron plate : 400x550
Power : 5 kW
Heating by reinforced stainless steel resistance
Control by thermostat
removable Splash guard
Drawer to collect greases

Base unit

Construction in stainless steel 18.10
Structure 2 mm
body 1 mm
External dimensions : 400x724x650
Interior dimensions : 330x656x430
Front without any visible screw
Double skin doors

**ELECTRIC**

Electric power : 5.00kW

Elec Réservation : INTERNAL TERMINAL BOARD - Elec fitting
: 400V THREE phases

Electrical devices standard to the norm EN 60-335