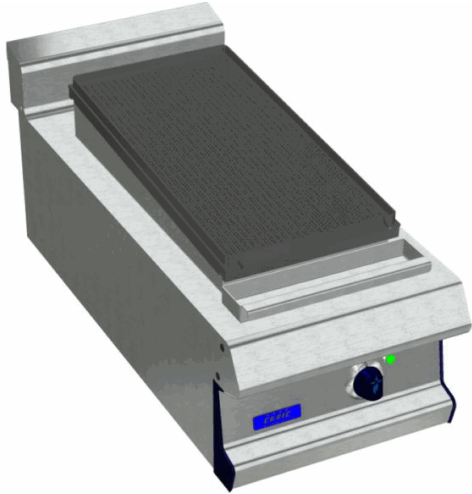


## ARMEN AM9F ELEC RIBBED CAST IRON

### HOT PLATE 400X550 - TOP ONLY



#### Characteristics

External dimensions : 400 X 925 X 270

Stainless steel top 18.10 planetary planetary brushed finish

Top thickness : 3 mm

body 1 mm in planetary brushed stainless steel

Structure : 2 mm in stainless steel

folded front edge radius 20 mm

Back edge forming a chimney cover

Front without any visible screw

#### Top

ribbed and sloping cast iron plate : 400x550

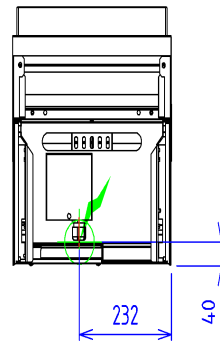
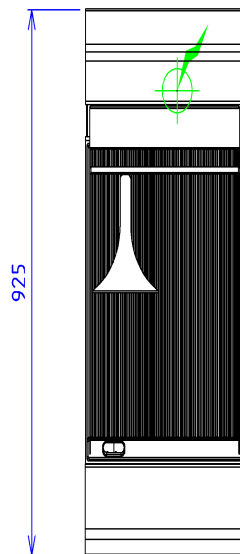
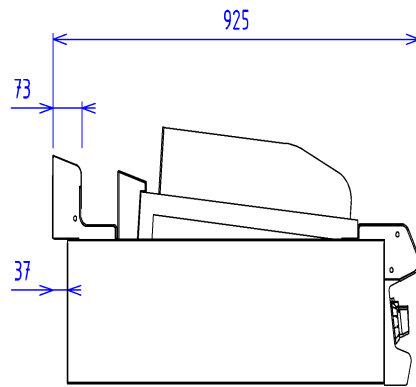
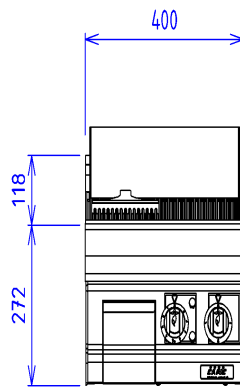
Power : 5 kW

Heating by reinforced stainless steel resistance

Control by thermostat

removable Splash gard

Drawer to collect greases



Electric power : 5.00kW

Elec Réservation : INTERNAL TERMINAL BOARD - Elec fitting  
: 400V THREE phases

Electrical devices standard to the norm EN 60-335