



Characteristics

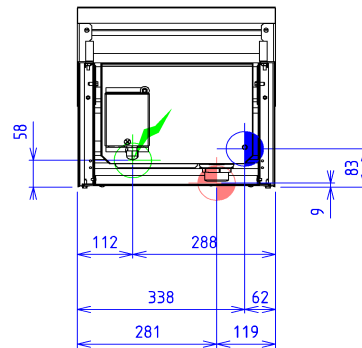
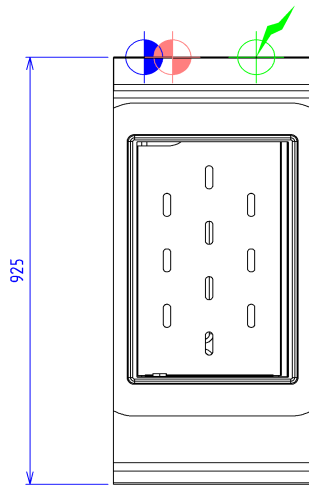
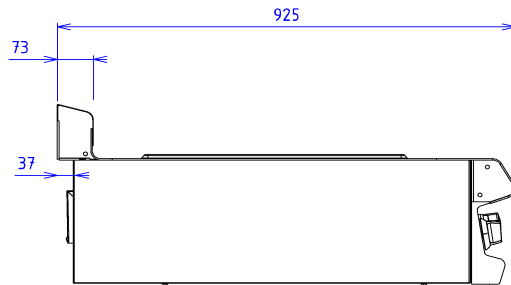
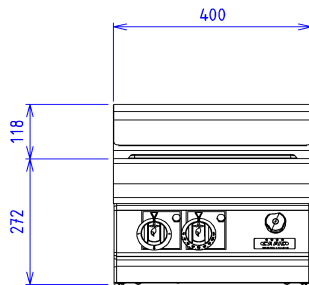
External dimensions : 400 X 925 X 270
 Stainless steel top 18.10 planetary planetary brushed finish
 Top thickness : 3 mm
 body 1 mm in planetary brushed stainless steel
 Structure : 2 mm in stainless steel
 folded front edge radius 20 mm
 Back edge forming a chimney cover
 Front without any visible screw

Top

18.10 stainless steel tank, thick 2mm
 Tank dimensions: 306x510x220
 For GN 1/1 tray (not provided)
 Heating by reinforced stainless steel resistances
 Regulation by thermostat 30-110°C
 Power : 2,4 kW
 Cold or hot water supply
 Waste plug dumping to be connected

Options :

digital regulator thermo + waterlevel for bain-marie (X901038)
 junction bar length 325 (X900421)



ELECTRIC



Electric power : 2.40kW

Elec Réserve : INTERNAL TERMINAL BOARD - Elec fitting : 230V SINGLE

230V SINGLE(Si option électrique sélectionnée)
Electrical devices standard to the norm EN 60-335

WATER/AIR



Drain fitting :40/49 threaded sleeve (1.1 / 2)